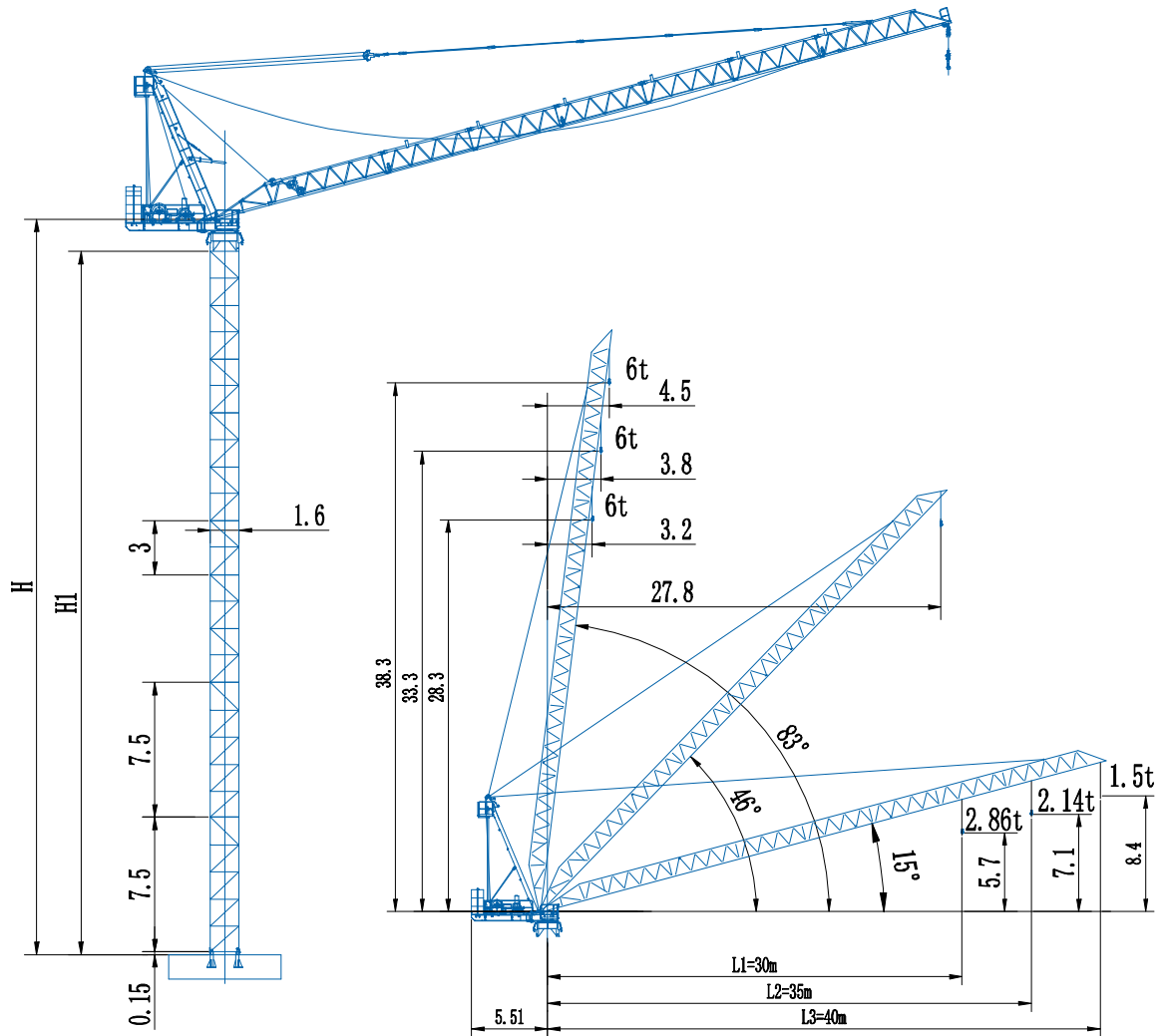


# CCTL110(D4015)

## 6t



Radius, angle and elevating capacity



# Masts & Foundation Load

D4015

Foundation load		In service	Out of service
H	kN	25.1	104.2
V	kN	468.8	448.5
Mk	kN·m	120	0
M	kN·m	1578	3646

H=41m

L46A1

Jib root height H:

Working Radius L1=30m/L2=35m,  
tower configuration 1+1+9, Jib root height H=44m

Working Radius L3=40m,  
tower configuration 1+1+8, Jib root height H=41m

# Anchorage

Locking wall tie

Loosening wall tie



## Load Diagrams

D4015

### 40 m radius

radius (m)	4.5-16.58	18	22	26	27.17	30	34	38	40
4fall (kg)	6000	5390	4080	3180	2970	2520	2010	1610	1440
2fall (kg)	3000	3000	3000	3000	3000	2560	2060	1660	1500

### 35 m radius

radius (m)	3.8-17.38	18	22	26	28.57	30	34	35
4fall (kg)	6000	5730	4370	3420	2950	2730	2200	2080
2fall (kg)	3000	3000	3000	3000	3000	2780	2250	2140

### 30 m radius

radius (m)	3.2-17.67	18	22	26	29.1	30
4fall (kg)	6000	5860	4470	3510	2940	2800
2fall (kg)	3000	3000	3000	3000	3000	2860

## Mechanisms

Hoisting		Fall	/				
		Speed	m/min	0~28	0~70	0~14	0~35
		LoadCapacityWeight	t	3	1.25	6	2.5
		Power	kw	22			
Trolleying		Time	min	≤3.2			
		Power	kw	22			
		Speed	r/min	0~0.67			
Slewing		Power	kw	4x1			

# Dahan Technology Co., Ltd.

**Address: Zheshan Industrial Park, Mingshui Economic Development Zone, Zhangqiu District, Shandong Province, China**

**Telephone: +86 531 83278899**

**Email: dahancranesale@yeah.net**

**Website: www.chinatowercranes.com**

Note: Dahan Construction Machinery keeps innovating, so the actual product caused by the product does not match the appearance and technical parameters of the sample. The actual product shall prevail. If there is any change, the company has the final interpretation of the sample. 2019.12print