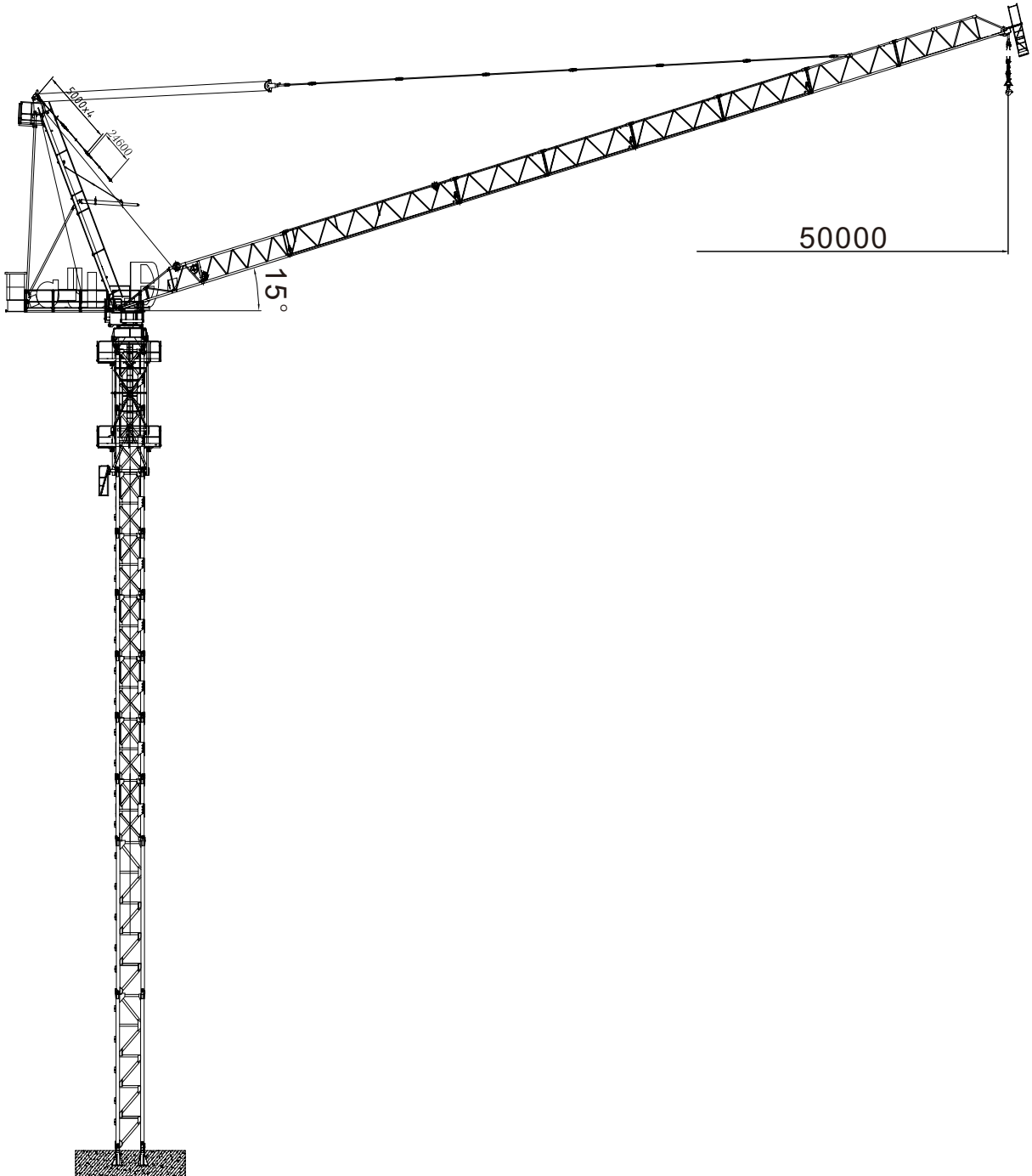
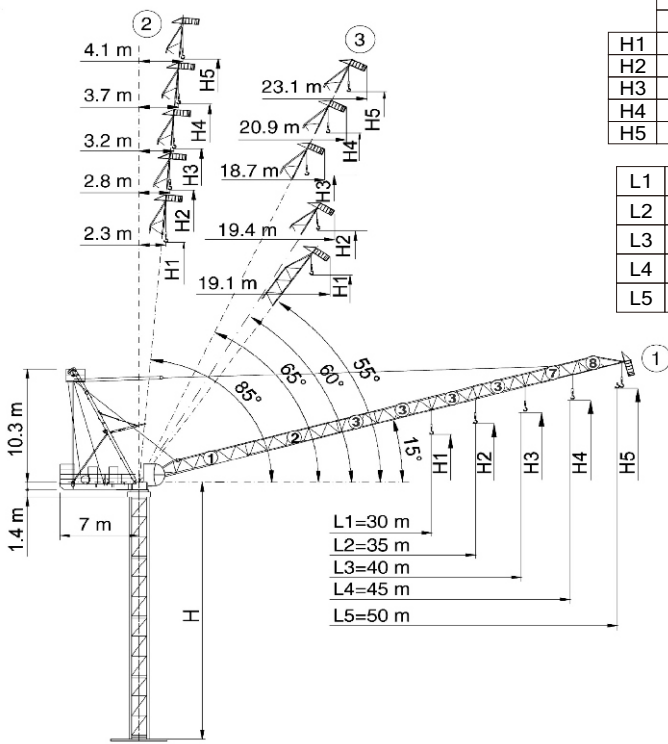


CCTL150-10

LUFFING TOWER CRANE



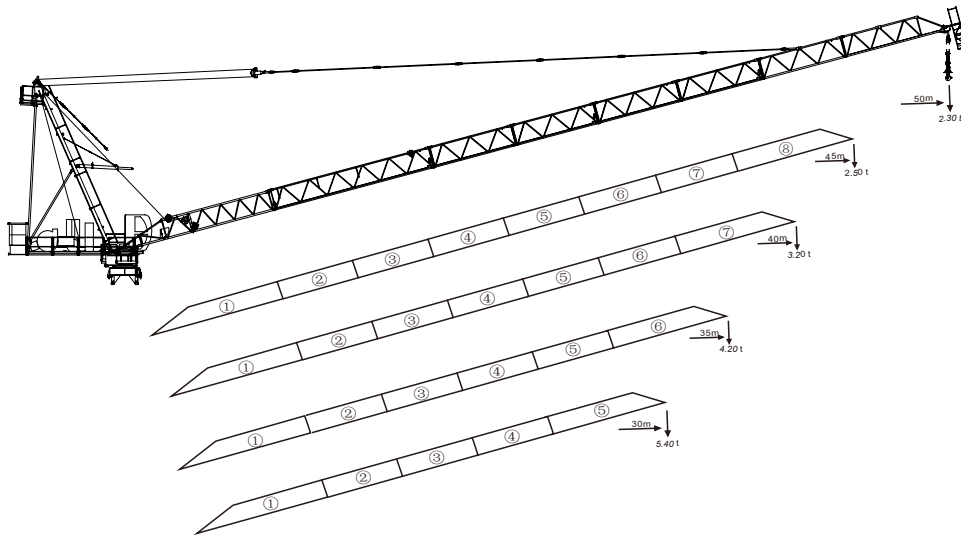
JIB COMBINATION/RADIUS&HOISTING HEIGHT



	H		
	①	②	③
H1	H+6.1	H+27.3	H+21.7
H2	H+7.5	H+32.5	H+27.7
H3	H+8.8	H+37.7	H+33.9
H4	H+10.1	H+42.8	H+38.5
H5	H+11.5	H+48	H+43.2

L1	30m=1+2+3+8
L2	35m=1+2+3+3+8
L3	40m=1+2+3+3+3+8
L4	45m=1+2+3+3+3+7+8
L5	50m=1+2+3+3+3+3+7+8

H	Tower height 塔身高度
①	Maximum jib 最大臂长
②	Minimum jib(in service) 最小臂长 (工作状态)
③	Minimum jib(out of service) 最小臂长 (非工作状态)

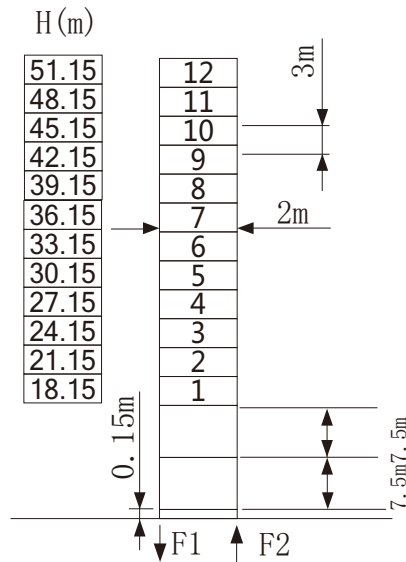


LOAD CAPACITY

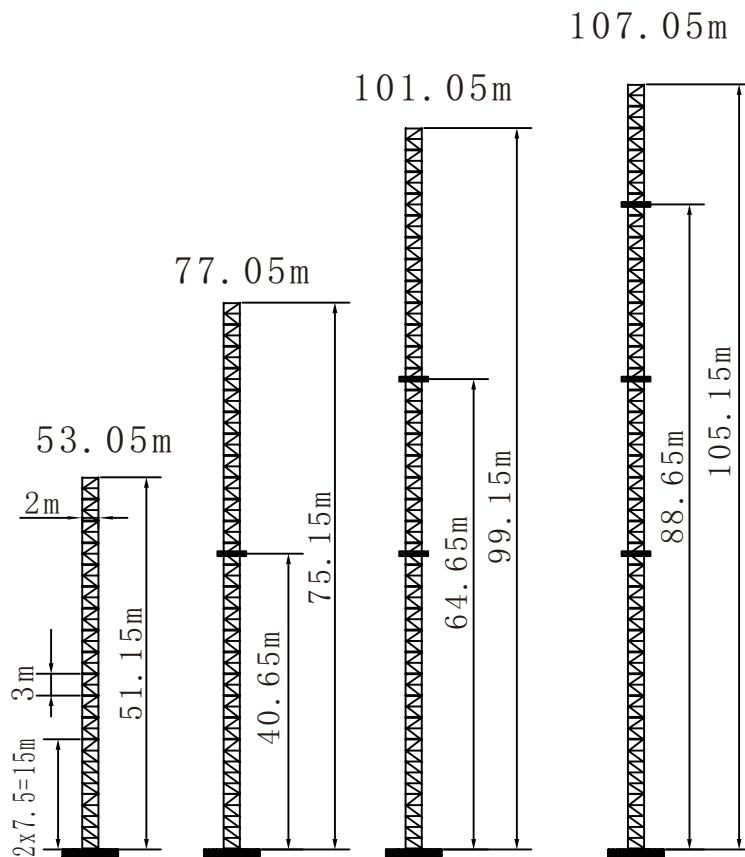
50m	2 falls	5t-4.1m-28.4m	t	15m	20m	25m	30m	35m	40m	45m	50m		
				5	5	5	4.61	3.6	2.85	2.56	2.3		
45m	2 falls	5t-3.7m-29.2m	t	15m	20m	25m	30m	35m	40m	45m			
				5	5	5	4.81	3.78	3	2.5			
				3 falls	7.5t-3.7m-22.1m	t	7.5	7.5	6.25	4.81	3.78	3	2.5
40m	4 falls	10t-3.7m-17.4m	t	10	8.42	6.25	4.81	3.78	3	2.5			
				15m	20m	25m	30m	35m	40m				
				5	5	5	5	3.97	3.2				
35m	3 falls	7.5t-3.2m-22.5m	t	7.5	7.5	6.45	5	3.97	3.2				
				4 falls	10t-3.2m-17.7m	t	10	8.62	6.45	5	3.97	3.2	
				15m	20m	25m	30m	35m					
30m	2 falls	5t-2.8m-34.9m	t	5	5	5	5	4.2					
				3 falls	7.5t-2.8m-23.1m	t	7.5	7.5	6.68	5.23	4.2		
				4 falls	10t-2.8m-18.1m	t	10	8.85	6.68	5.23	4.2		
30m	2 falls	5t-2.3m-30m	t	15m	20m	25m	30m						
				5	5	5	5						
				3 falls	7.5t-2.3m-23.5m	t	7.5	7.5	6.84	5.4			
30m	4 falls	10t-2.3m-18.3m	t	10	9.02	6.84	5.4						

MAST HEIGHT

L68B2



ANCHORAGES

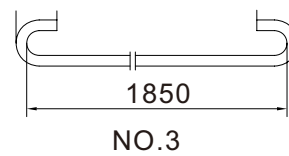
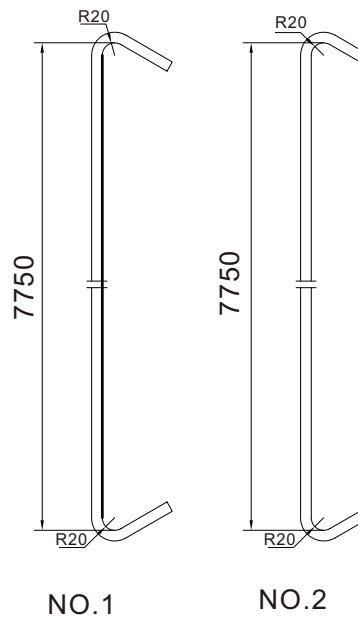
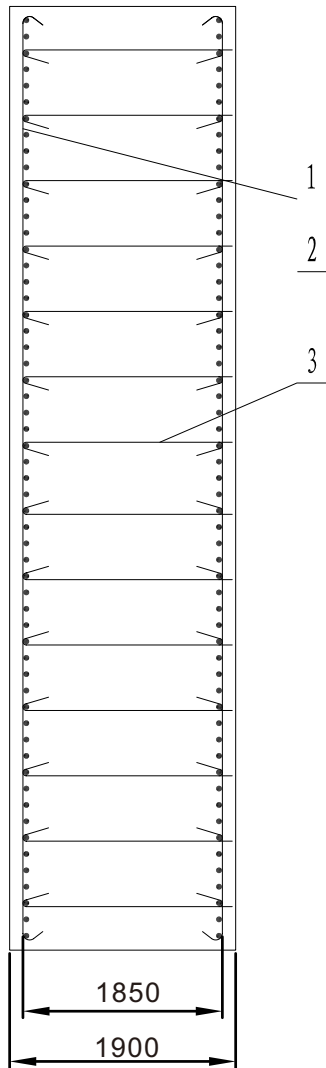
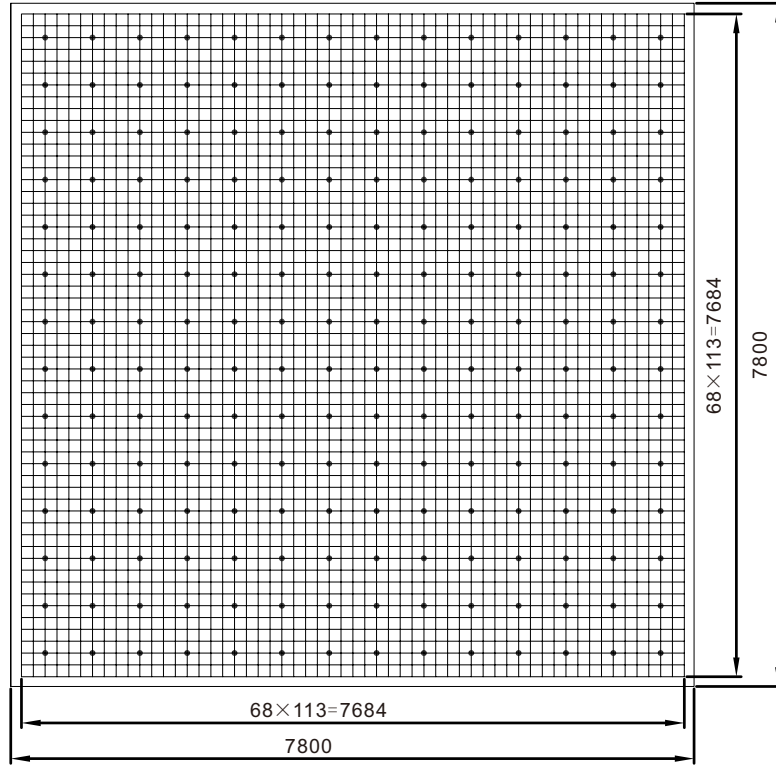


MECHANISM

Hoisting mechanism							Rope length	
	YZPE-37B31		m/min	0-31.15	0-46.7	0-62.25	37kW	450m
			t	5	2.75	1.8		
			m/min	0-20.76	0-31.13	0-41.5		
			t	7.5	4.12	2.7		
		m/min	0-15.57	0-23.35	0-31.12			
		t	10	5.5	3.6			
	Luffing mechanism				Slewing mechanism			
	50VVF40	1.8min	37kW		RVF4	0~0.8r/min	2x4KW	
Power supply	380V(±5%) 50Hz			Power consumption	69kVA			

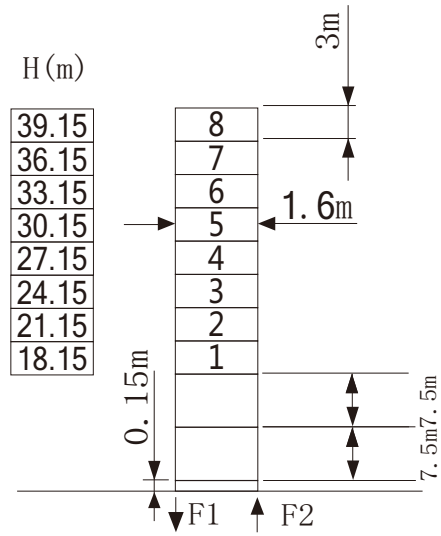
FOUNDATION

L68B2

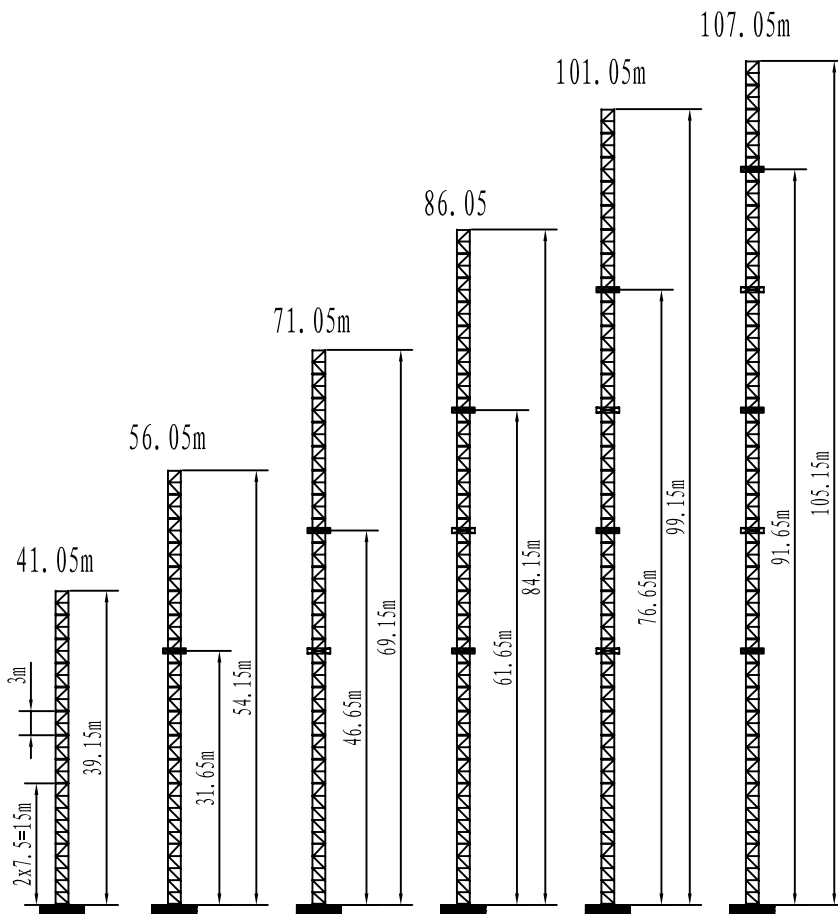


MAST HEIGHT

L48



ANCHORAGES



FOUNDATION

L48

