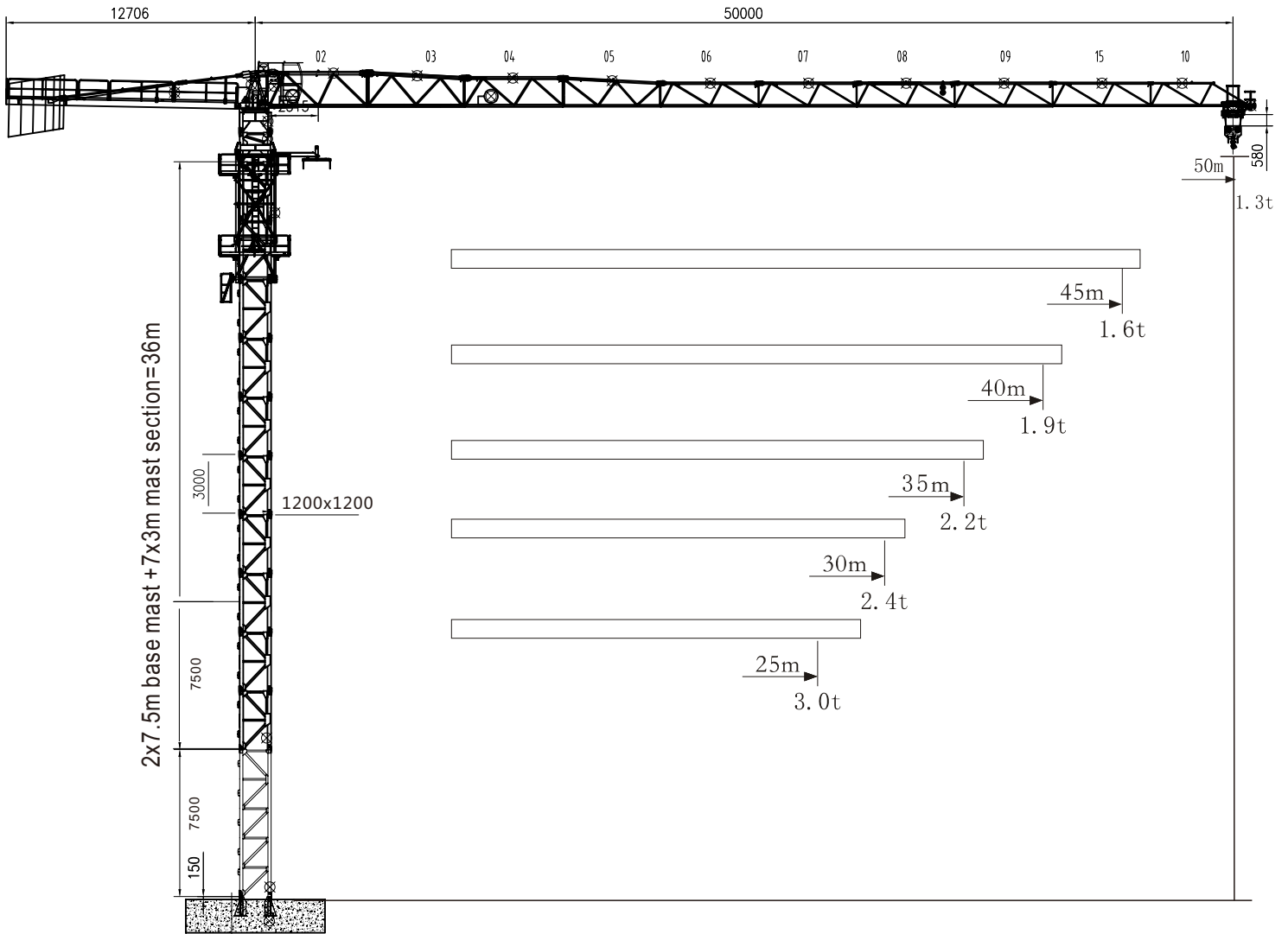


CCTT91.5

FLAT TOP TOWER CRANE



LOAD CAPACITY

m	3.2	15	17	20	22	25	26.7	28.9	30	32	35	37	40	42	45	47	50
t	II	2.5	2.5	2.5	2.5	2.5	2.5	2.5	2.4	2.2	2	1.9	1.7	1.6	1.5	1.4	1.3
t	IV	5	4.3	3.6	3.2	2.7	2.5	2.25	2.15	1.95	1.75	1.65	1.45	1.35	1.25	1.15	1.05

m	3.2	16	17	20	22	25	27	28.4	30.8	32	35	37	40	42	45
t	II	2.5	2.5	2.5	2.5	2.5	2.5	2.5	2.5	2.4	2.2	2	1.85	1.75	1.6
t	IV	5	4.6	3.8	3.4	2.9	2.65	2.5	2.25	2.15	1.95	1.75	1.6	1.5	1.35

m	3.2	16.4	17	20	22	25	27	29.1	31.6	32	35	37	40
t	II	2.5	2.5	2.5	2.5	2.5	2.5	2.5	2.5	2.45	2.2	2.1	1.9
t	IV	5	4.8	3.9	3.5	3	2.75	2.5	2.25	2.2	1.95	1.85	1.65

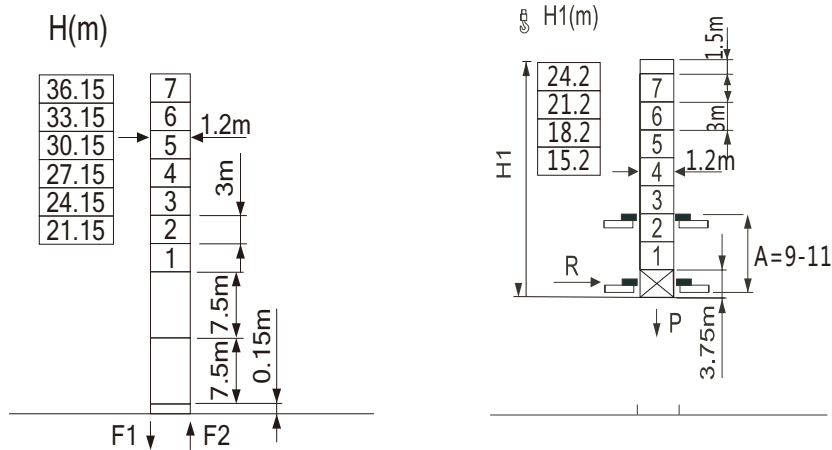
m	3.2	16.4	17	20	22	25	27	29.1	31.6	32	35
t	II	2.5	2.5	2.5	2.5	2.5	2.5	2.5	2.5	2.45	2.2
t	IV	5	4.8	3.9	3.5	3	2.75	2.5	2.25	2.2	1.95

m	3.2	16.3	17	20	22	25	27	30
t	II	2.5	2.5	2.5	2.5	2.5	2.5	2.4
t	IV	5	4.8	3.9	3.5	3	2.75	2.15

m	3.2	16.3	17	20	22	25
t	II	2.5	2.5	2.5	2.5	2.5
t	IV	5	4.8	3.9	3.5	3

MAST HEIGHT

S24



MECHANISM

	Hoisting mechanism					 Rope length
	20LVF10		m/min	0-30	30-60	
		t	2.5	1.25		
	Trolleying mechanism				Slewing mechanism	
	BE2448	0-40	2.2kw		RVF5.5	0 ~ 0.7r/min
Power supply	380V(±5%) 50Hz			Power consumption	22KVA	