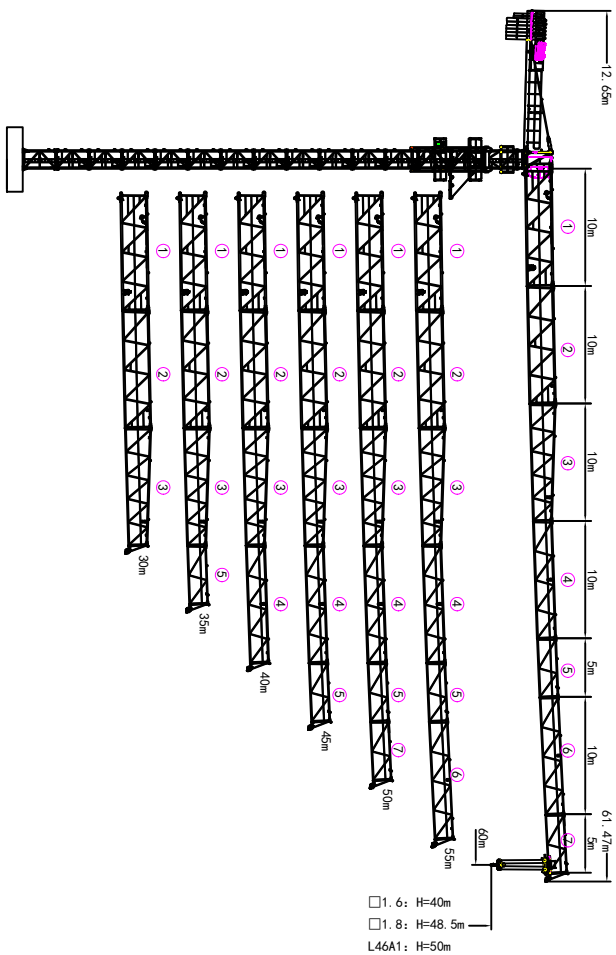
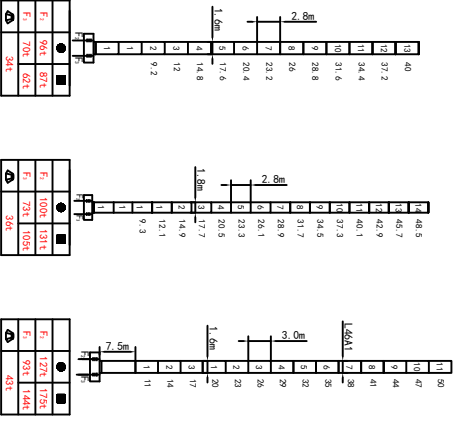


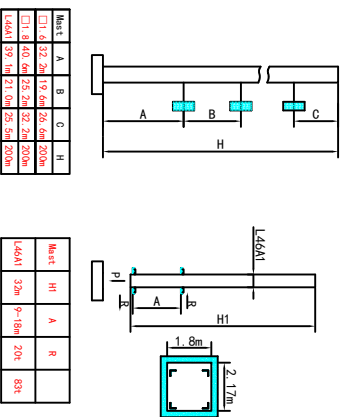
外形尺寸 Outline Dimensions



塔身截面 Masts



附着 Anchorages



● 工作状态总反力 In service Reaction ■ 非工作状态总反力 Out of service Reaction
 ◎ 不平衡力及材料重量 Total weight of free standing crane (unbalanced weight & lift (m))

载荷特性表 Load Diagrams 6t

R _{max}	Fail	R _{Crane}	C _{max}	20	25	30	35	40	45	50	55	60
60m	16.5	6.0	4.82	3.71	2.98	2.45	2.05	1.75	1.50	1.30	1.13	
	30.4	3.0	3.0	3.0	2.52	2.12	1.82	1.57	1.37	1.20		
	18.8	6.0	5.32	4.10	3.28	2.70	2.26	1.92	1.65	1.43		
55m	32.8	3.0	3.0	3.0	3.0	2.77	2.33	1.99	1.72	1.50		
	18.8	6.0	6.0	4.21	3.39	2.79	2.35	2.01	1.73			
	33.6	3.0	3.0	3.0	3.0	2.86	2.42	2.08	1.80			
50m	18.9	6.0	5.52	4.26	3.43	2.83	2.38	2.03				
	34.0	3.0	3.0	3.0	3.0	2.90	2.45	2.10				
45m	18.9	6.0	5.52	4.26	3.43	2.83	2.38					
	28.6	3.0	3.0	3.0	3.0	2.90	2.45					
40m	19.5	6.0	5.82	4.47	3.57	2.93						
	29.6	3.0	3.0	3.0	3.0	3.0						
35m	19.5	6.0	5.83	4.51	3.63							
	30	3.0	3.0	3.0	3.0							

机构 Mechanisms 6t

名称	m/min		t		m/min		t		空绳量 m	电机功率 kW
	0-80	0-40	1.5	0-40	0-20	6.0	3.0			
起升 Hoisting	6t	26LVF15	0-40	3.0	0-40	6.0	3.0	3.60		26
变幅 Trolleying	6t	BP4030X	0-40	3.0	0-40	6.0	3.0			3.0
回转 Slewing	2RVF4		0-0.6	rpm	0-0.6	rpm				4.0×2
电源 Power	380V (±10%) /50Hz									26LVF15: 37kW

平衡重 Counter weight

平衡重	PHZ2600	PHZ1000		
60m	12.65m	17600kg	6	2
55m	12.65m	16600kg	6	1
50m	12.65m	15000kg	5	2
45m	12.65m	14000kg	5	1
40m	12.65m	12400kg	4	2
35m	12.65m	11400kg	4	1
30m	12.65m	10400kg	4	/