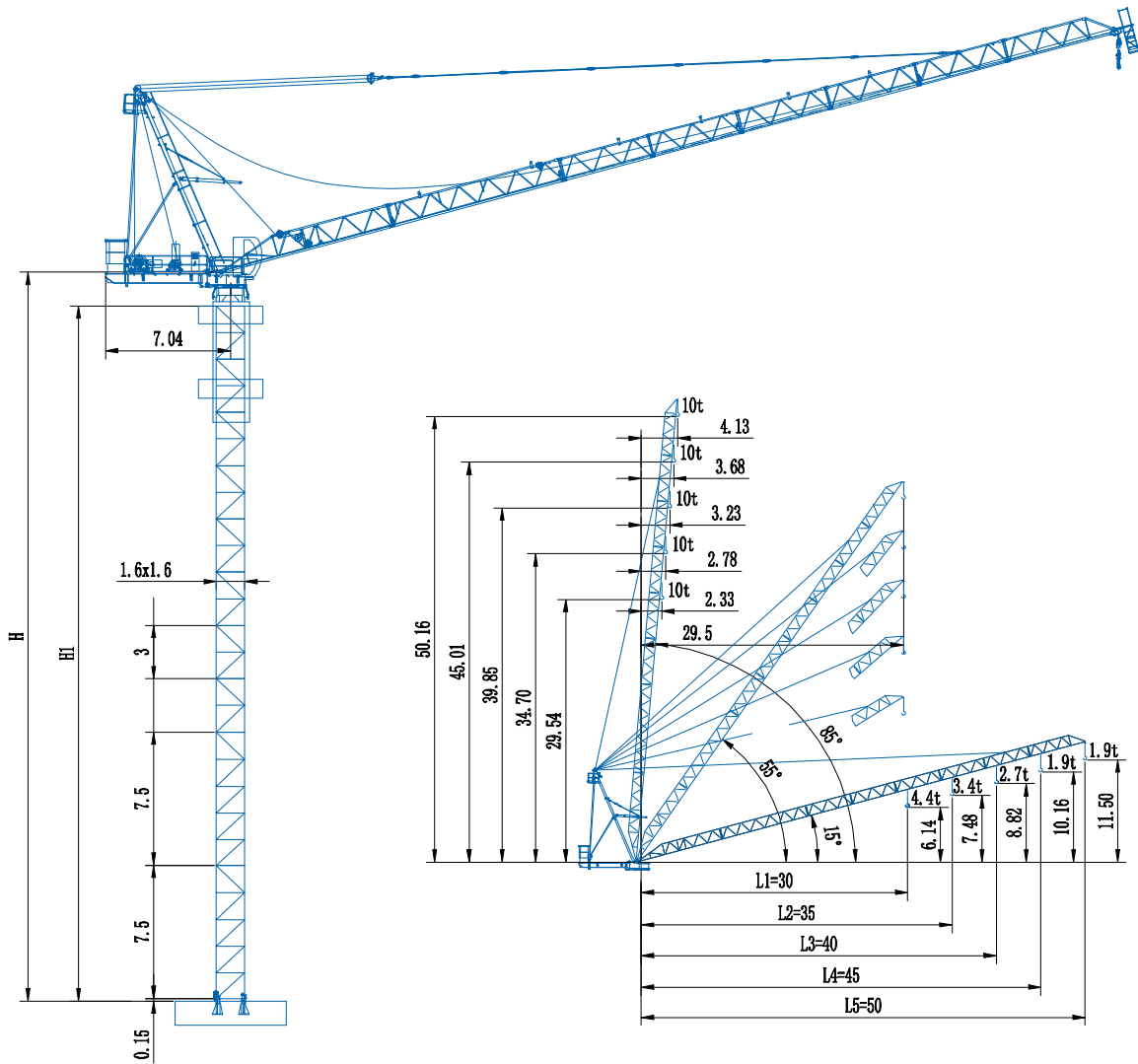


CCTL150A(D5023A)

10t

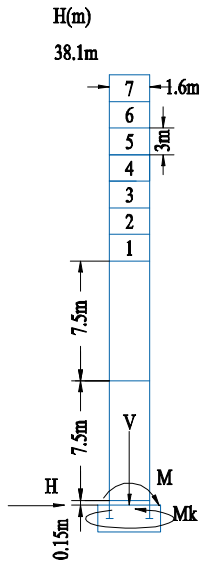
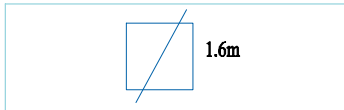
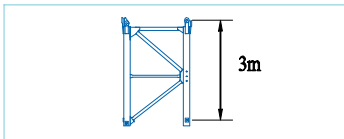


Radius, angle and elevating capacity

Masts & Foundation Load

D5023A

Foundation load		In service	Out of service
H	kN	32.2	156.7
V	kN	631.4	590.9
Mk	kN·m	162.9	0
M	kN·m	2556	6259



L48A1

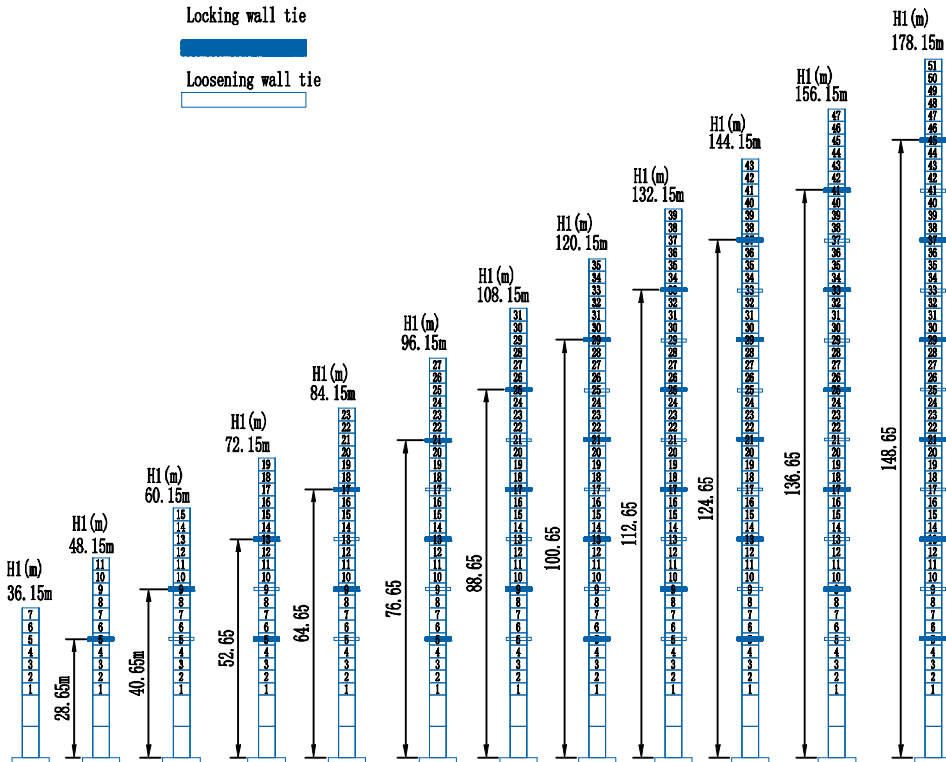
Jib root height H:

Working Radius L1=30m/L2=35m,
tower configuration 1+1+9, Jib root height H=44.1m

Working Radius L3=40m,
tower configuration 1+1+8, Jib root height H=41.1m

Working Radius L4=45m/L5=50m,
tower configuration 1+1+7, Jib root height H=38.1m

Anchorage





Load Diagrams

D5023A

50 m radius									
radius	4.1~30.4	35	40	45	50				
4fall		3820	3190						
3fall	5000	4040	4110	2770	2300				
2fall		4100	3350						
45 m radius									
radius	3.7~18	19	22.7	25	30	31.35	36	40	45
4fall	10000	9360	7500		6620	5170	4860	3960	2750
3fall		7500							
2fall				5000			4060	3460	2850
40 m radius									
radius	3.2~18.5	20	23.32	25	30.42	32	35	40	
4fall	10000	9090	7500		6860	5260	4900	4300	3500
3fall		7500							
2fall				5000			4400	3600	
35 m radius									
radius		20	23.87	25	30	32.55	35		
4fall		9390	7500		7060	5510	4900	4400	
3fall		7500							
2fall				5000			4500		
30 m radius									
radius	2.3~19.5	24.48	30						
4fall	10000	7500	5700						
3fall		7500	5700						
2fall		5000							

Mechanisms

Hoisting		Fall	/					
		Speed	m/min	0~31.1	0~62.3	0~15.6	0~31.1	
		LoadCapacityWeight	t	5.0	2.3	10	4.6	
		Power	kw	37				
Trolleying		Time	min	≥3				
		Power	kw	37				
		Speed	r/min	0~0.67				
Slewing		Speed	r/min	0~0.67				
		Power	kw	5.5×2				

DAHAN Dahan Technology Co., Ltd.

Address: Zheshan Industrial Park, Mingshui Economic Development Zone, Zhangqiu District, Shandong Province, China
Telephone: +86 531 83278899
Email: dahancranesale@yeah.net
Website: www.chinatowercranes.com

Note: Dahan Construction Machinery keeps innovating, so the actual product caused by the product does not match the appearance and technical parameters of the sample. The actual product shall prevail. If there is any change, the company has the final interpretation of the sample. 2019.12 print