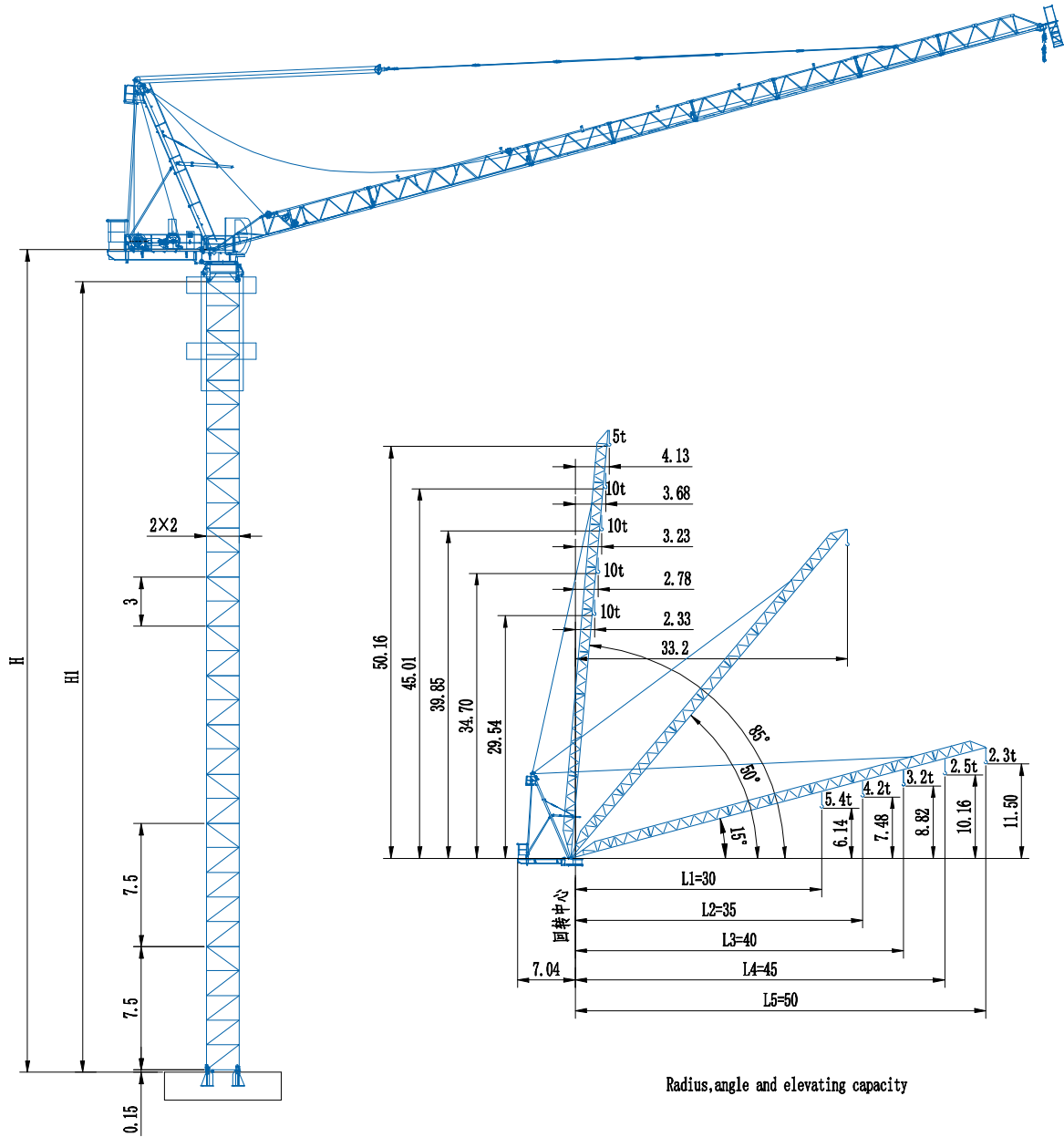


# CCTL150B(D5023B)

## 10t



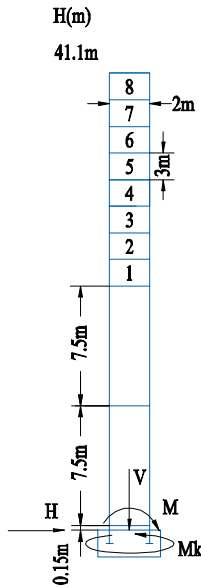
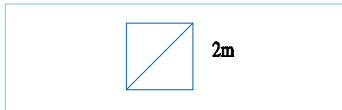
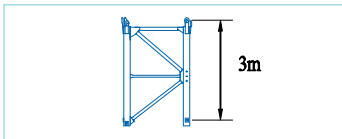
Radius, angle and elevating capacity



## Masts & Foundation Load

DS023B

Foundation load		In service	Out of service
H	kN	36.9	197.6
V	kN	737.4	696.9
Mk	kN·m	162.9	0
M	kN·m	3022	7978



L68B2

Jib root height H:

Working Radius L1=30m,  
tower configuration 1+1+11, Jib root height H=50.1m

Working Radius L2=35m/L3=40m,  
tower configuration 1+1+10, Jib root height H=47.1m

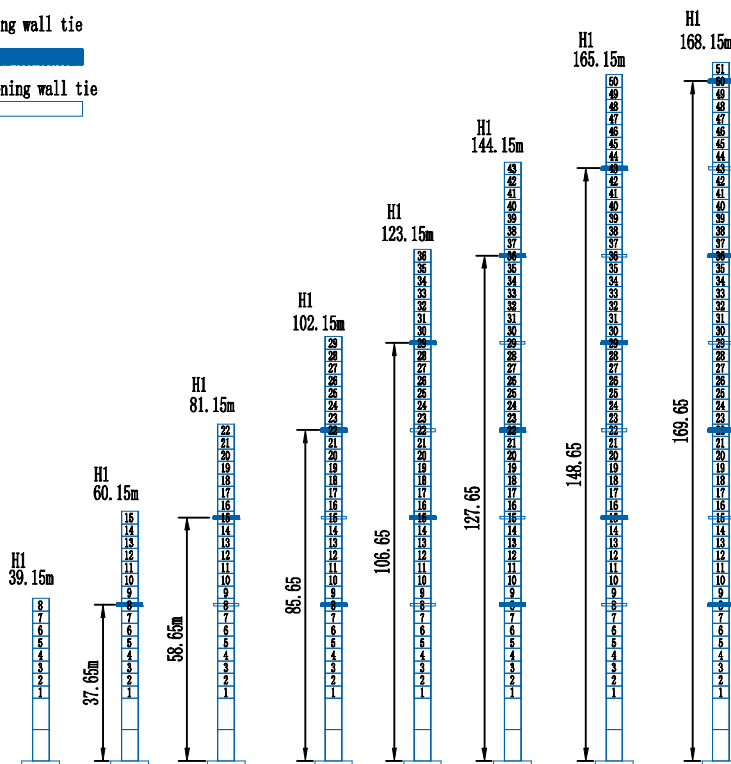
Working Radius L4=45m,  
tower configuration 1+1+9, Jib root height H=44.1m

Working Radius L5=50m,  
tower configuration 1+1+8, Jib root height H=41.1m

## Anchorage

Locking wall tie

Loosening wall tie





## Load Diagrams

DS023B

<b>50 m radius</b>									
radius	4.1~30.4	35	40	45	50				
4fall	5000	3820	3190						
3fall		4040	4110	2770	2300				
2fall		4100	3350						
<b>45 m radius</b>									
radius	3.7~18	19	22.7	25	30	31.35	36	40	45
4fall	10000	9360	7500	6620	5170	4860	3960	3360	2750
3fall	7500						4060	3460	2850
2fall	5000								
<b>40 m radius</b>									
radius	3.2~18.5	20	23.32	25	30.42	32	35	40	
4fall	10000	9090	7500	6860	5260	4900	4300	3500	
3fall	7500						4400	3600	
2fall	5000								
<b>35 m radius</b>					<b>30 m radius</b>				
radius	20		23.87	25	30	32.55	35		
4fall	9390		7500	7060	5510	4900	4400		
3fall	7500						4500		
2fall	5000								
radius	2.3~19.5	24.48	30						
4fall	10000	7500	5700						
3fall	7500		5700						
2fall	5000								

## Mechanisms

<b>Hoisting</b>		<b>Fall</b>	/					
		<b>Speed</b>	m/min	0~31.1	0~62.3	0~15.6	0~31.1	
		<b>LoadCapacityWeight</b>	t	5.0	2.3	10	4.6	
		<b>Power</b>	kw	37				
<b>Trolleying</b>		<b>Time</b>	min	≥3				
		<b>Power</b>	kw	37				
		<b>Speed</b>	r/min	0~0.67				
<b>Slewing</b>		<b>Speed</b>	r/min	0~0.67				
		<b>Power</b>	kw	5.5×2				



### 广东大汉建设机械有限公司

联系人: 何斌业  
 联系电话: 13924882909  
 邮箱: hebinye@163.com  
 地址: 广东省佛山市南海区桂城街道平洲工业园胜利东路

GUANGDONG DAHAN CONSTRUCTION MACHINERY CO., LTD

CONTACT PERSON: WILLIAM  
 TEL: +8613924882909  
 E-MAIL: hebinye@163.com  
 ADDRESS: SHENGLI RODA, PINGZHOU INDUSTRIAL PARK NANHAI DISTRICT, FOSHAN, GUANGDONG PROVINCE P. R. CHINA

注: 大汉机械不断创新, 因此引起的实物与样本中产品外观和技术参数不符, 以实物为准, 如有变更不另行通知, 本公司拥有对本资料最终解释权, 2019.12更新