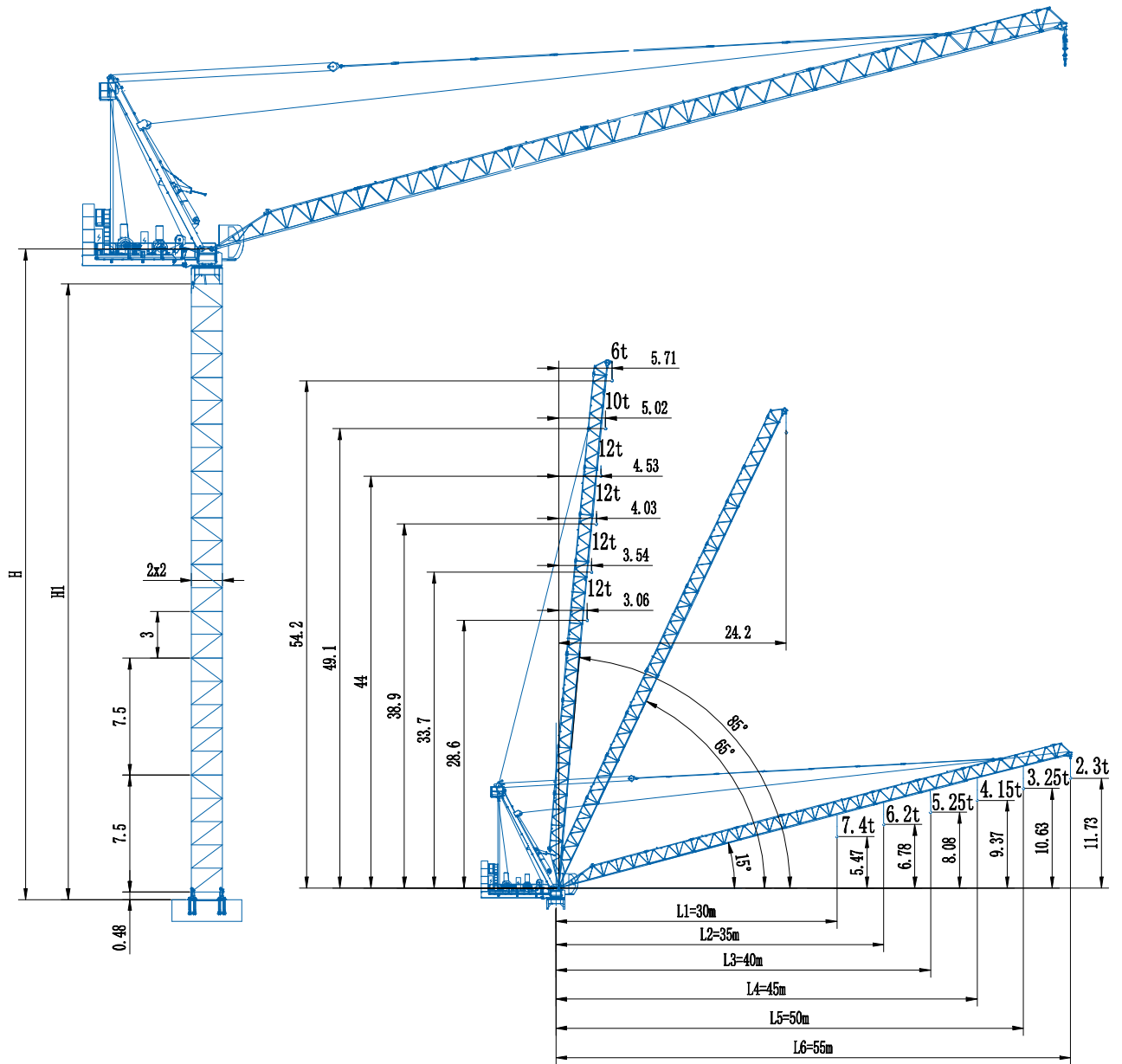


CCTL220(D5523)

12t

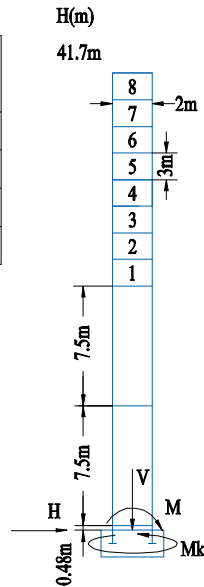
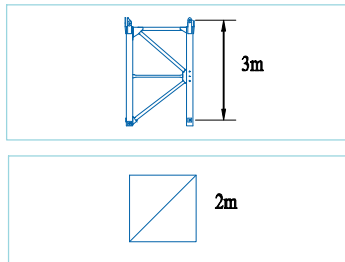


Radius, angle and elevating capacity

Masts & Foundation Load

D5523

Foundation load		In service	Out of service
H	kN	38.7	197.8
V	kN	774.6	745.6
Mk	kN·m	201	0
M	kN·m	3456	8070



L68B2

Jib root height H:

Working Radius L1=30m,
tower configuration 1+1+11, Jib root height H=50.7m

Working Radius L2=35m
tower configuration 1+1+10, Jib root height H=47.7m

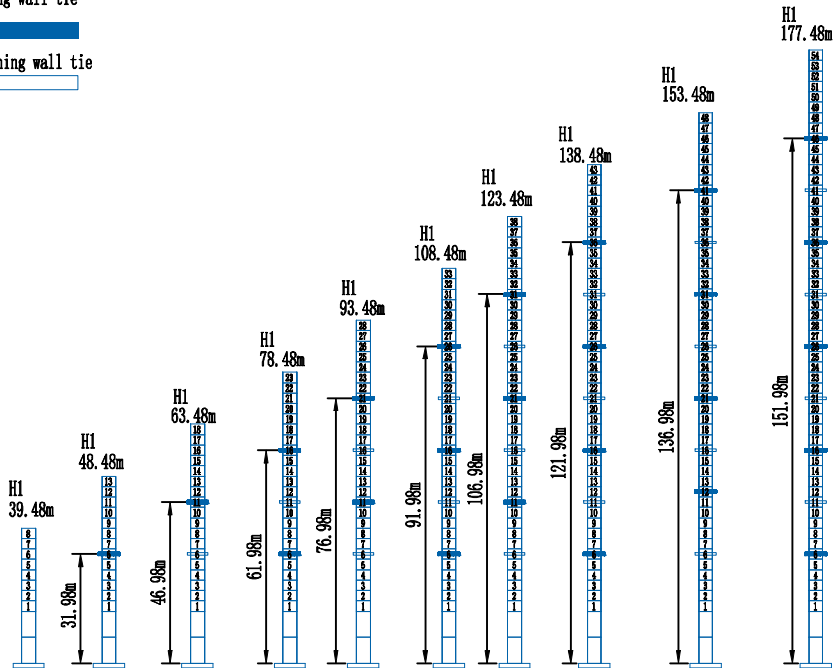
Working Radius L3=40m/L4=45m,
tower configuration 1+1+9, Jib root height H=44.7m

Working Radius L5=50m/L6=55m,
tower configuration 1+1+8, Jib root height H=41.7m

Anchorage

Locking wall tie

Loosening wall tie





Load Diagrams

D5523

55 m radius								35 m radius			
radius	3~31.8	35	40	45	50	55	radius	3~20	25	30	35
4fall	6000	5400	4300	3400	2700	2300	4fall	12000	9600	7400	6200
2fall							2fall	6000			
50 m radius								30 m radius			
radius	3~23.7	25	30	35	40	45	50	radius	3~20	25	30
4fall	10000	9300	7000	5400	4700	4000	3250	4fall	12000	9600	7400
2fall	6000						2fall	6000			
45 m radius											
radius	3~20	25	30	34.9	35	40	45				
4fall	12000	9400	7000	6000	6000	4800	3900				
2fall	6000						2fall	6300 5100 4150			
40 m radius											
radius	3~20	25	30	35	37	40	45				
4fall	12000	9600	7400	6200	6000	5000	3900				
2fall	6000						2fall	5250 4150			

Mechanisms

Hoisting		Fall	/				
		Speed	m/min	0~62.8	0~25.1	0~31.4	0~12.6
		LoadCapacityWeight	t	2.8	6	5.6	12
		Power	kw	45			
Trolleying		Time	min	≤2.5			
		Power	kw	45			
		Speed	r/min	0~0.67			
Slewing		Speed	r/min	0~0.67			
		Power	kw	5.5×2			

DAHAN Dahan Technology Co., Ltd.

Address: Zheshan Industrial Park, Mingshui Economic Development Zone, Zhangqiu District, Shandong Province, China
Telephone: +86 531 83278899
Email: dahancranesale@yeah.net
Website: www.chinatowercranes.com

Note: Dahan Construction Machinery keeps innovating, so the actual product caused by the product does not match the appearance and technical parameters of the sample. The actual product shall prevail. If there is any change, the company has the final interpretation of the sample. 2019.12print