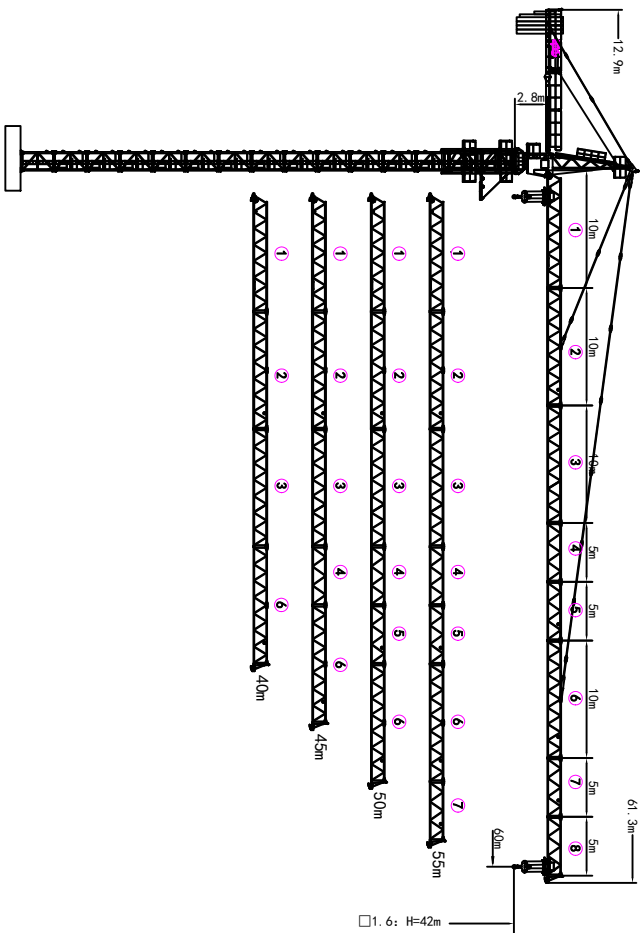


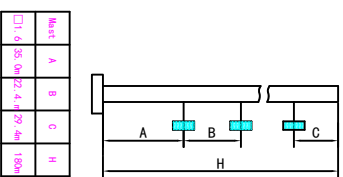
## 外形尺寸 Outline Dimensions



## 塔身截面 Masts

16	42
14	39.2
13	36.4
12	33.6
11	30.8
10	28.0
9	25.2
8	22.4
7	19.6
6	16.8
5	14.0
4	11.2

## 附着 Anchorages



● 工作状态总反力 In service Reaction ■ 非工作状态总反力 Out of service Reaction  
 ◎ 不平衡力及总制动力矩重量 Total weight of free standing crane (including counter weight & ballast)

附墙道数: Number of the collars=8(A-D)×8(H)

## 载荷特性表 Load Diagrams 6t

Radius	Failure	R <sub>max</sub>	R <sub>min</sub>	G <sub>max</sub>	15	20	25	30	35	40	45	50	55	60
60m	16.8	6.0	6.0	4.90	3.76	2.99	2.46	2.06	1.75	1.50	1.30	1.14		
55m	32.2	3.0	3.0	5.33	4.10	3.28	2.70	2.27	1.94	1.67	1.46			
50m	18.5	6.0	6.0	5.50	4.23	3.39	2.79	2.35	2.01	1.74				
45m	18.5	6.0	6.0	5.50	4.23	3.39	2.79	2.35	2.01					
40m	18.5	6.0	6.0	5.50	4.23	3.39	2.79	2.35	2.01					

## 机构 Mechanisms 6t

名称	□		■		容绳量 m	电机功率 kW
	m/min	t	m/min	t		
起升 Hoisting	24LVF15	0-80	0-40	1.5	360	26
变幅 Trolleying	BP4030X	0-20	0-40	3.0		3.0
回转 Slewing	2RVF4	0-0.6	0-0.6	rpm		4.0×2
电源 Power	380V (±10%) / 50Hz					24LVF15: 37kW

## 平衡重 Counter weight

半径	平衡重	PHZ3250	PHZ2000	PHZ1000
60m	12.9m	16000KG	4	1
55m	12.9m	15000KG	4	1
50m	12.9m	14000KG	4	1
45m	12.9m	13000KG	4	1
40m	12.9m	10750KG	3	1