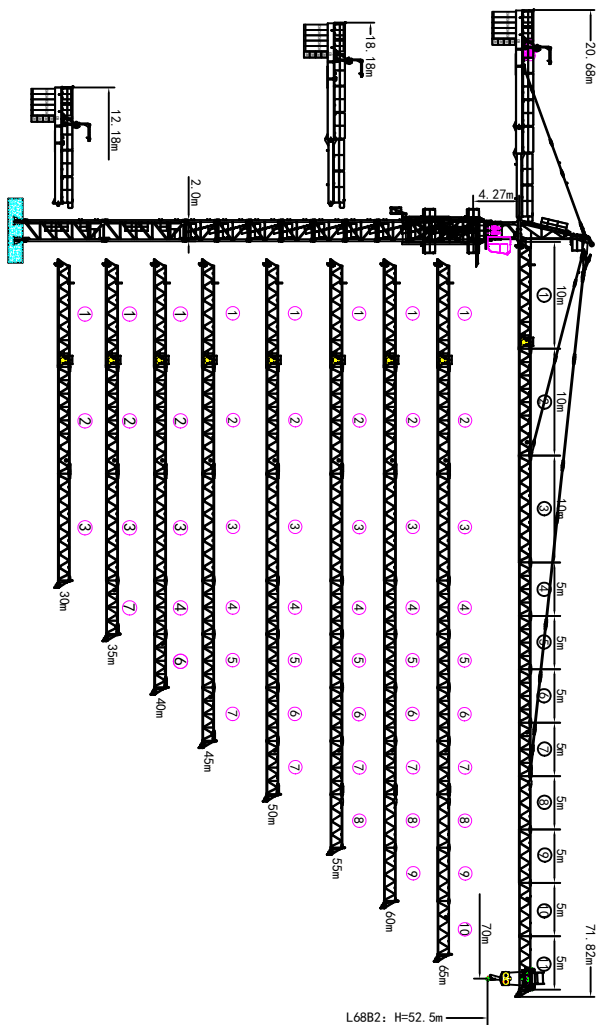


外形尺寸 Outline Dimensions

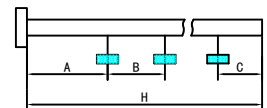


塔身截面 Masts

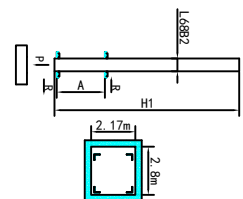
12	32.5	H(m)
11	49.5	
10	46.5	
9	43.5	
8	40.5	
7	37.5	
6	34.5	
5	31.5	
4	28.5	
3	25.5	
2	22.5	
1	19.5	



附着 Anchorages



Mast	A	B	C	H
L68B2	40.05m	21m	32m	223.5m



Mast	H1	A	R
L68B2	88.8m	0~16m	35.41~39m

● 工作状态反力 In service Reaction ■ 非工作状态反力 Out of service Reaction
 ◎ 不平衡力及制动力制动力矩等 Total weight of free standing crane (excluding counter weight & ball) (kg)

附墙道数: Number of the collar: (H-A)÷D×8÷4

载荷特性表 Load Diagrams 12t

Radius (m)	Fail	R _{Crane}	Q _{max}	20	25	30	35	40	45	50	55	60	65	70
70m	⌋	21.4	12.0	12.0	10.0	8.0	6.5	5.5	4.75	4.15	3.55	3.15	2.75	2.45
	⌋	41.9	6.0	6.0	6.0	6.0	6.0	6.0	5.5	4.9	4.3	3.9	3.5	3.2
	⌋	22.8	12.0	12.0	10.8	8.7	7.2	6.2	5.15	4.55	3.95	3.45	3.1	
65m	⌋	44.7	6.0	6.0	6.0	6.0	6.0	6.0	5.9	5.3	4.7	4.2	3.85	
	⌋	22.8	12.0	12.0	10.8	8.7	7.2	6.2	5.15	4.55	3.95	3.45		
60m	⌋	44.7	6.0	6.0	6.0	6.0	6.0	6.0	5.9	5.3	4.7	4.2		
	⌋	22.8	12.0	12.0	10.8	8.7	7.2	6.2	5.15	4.55	3.95			
55m	⌋	44.7	6.0	6.0	6.0	6.0	6.0	6.0	5.9	5.3	4.7	4.2		
	⌋	23.3	12.0	12.0	11.1	8.9	7.4	6.2	5.35	4.65				
50m	⌋	45.7	6.0	6.0	6.0	6.0	6.0	6.0	5.9	5.3	4.7	4.2		
	⌋	23.8	12.0	12.0	11.3	8.9	7.4	6.2	5.35					
45m	⌋	24.7	12.0	12.0	11.8	9.5	7.9	6.7						
40m	⌋	24.8	12.0	12.0	11.9	9.6	7.95							
35m	⌋	24.9	12.0	12.0	11.9	9.6								
30m	⌋	24.9	12.0	12.0	11.9	9.6								

机构 Mechanisms 12t

名称	规格	速度		容绳量	电机功率		
		m/min	t			m	kW
起升 Hoisting	12t SSLWF30	0-90	3.0	0-45	6.0	630	55
变幅 Trolleying	BP6555X	0-45	6.0	0-22.5	12.0		5.5
回转 Slewing	ZWFS-5	0-0.6		0-0.6			7.5×2
电源 Power	380V (±10%) / 50Hz						SSLWF30: 75.5kW

平衡重 Counter weight

塔身高度	平衡重	PHZ4200	PHZ700	PCB
70m	20.68m	24860kg	5	1
65m	20.68m	24160kg	5	1
60m	20.68m	22060kg	5	1
55m	18.18m	24860kg	5	1
50m	18.18m	22760kg	5	1
45m	18.18m	19260kg	4	1
40m	18.18m	17160kg	3	1
35m	18.18m	14360kg	3	1
30m	12.18m	20660kg	4	1