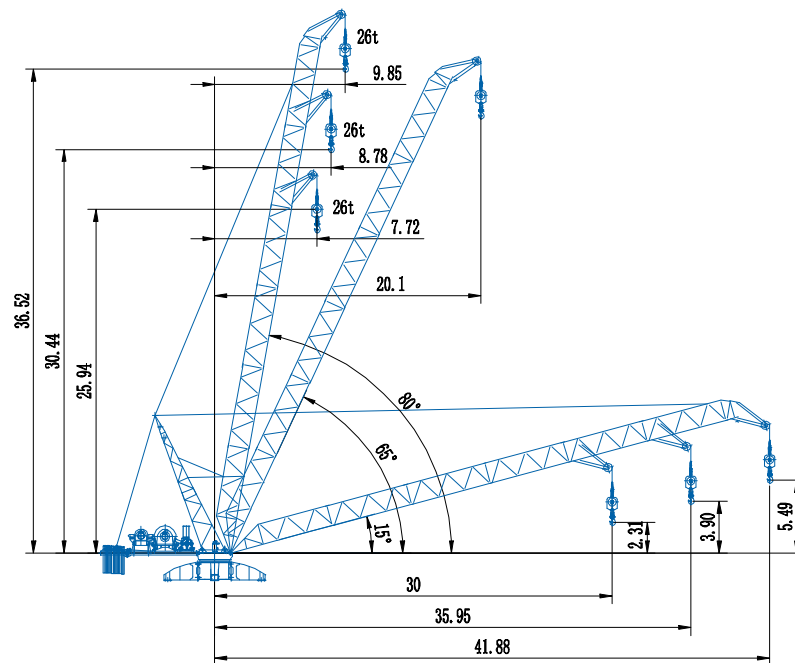
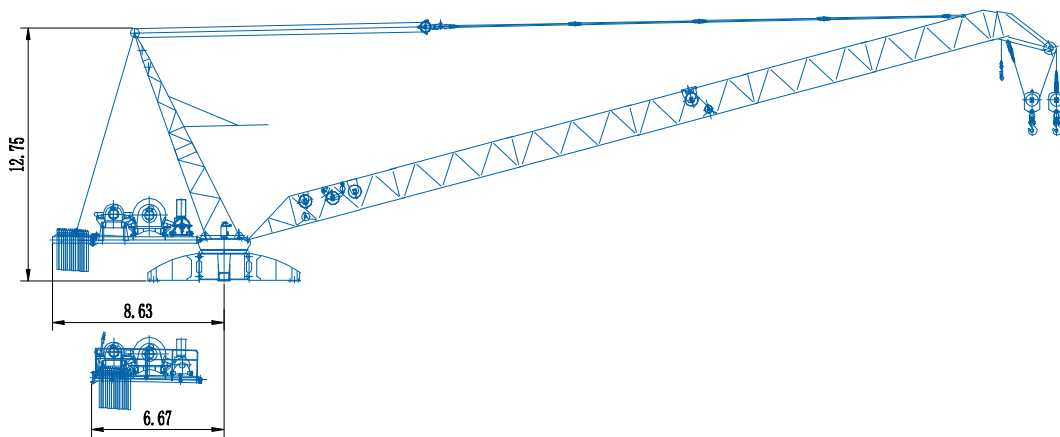


# BNK380(WD26t)



Radius, angle and elevating capacity

## Load Diagrams

WD26t

Counter jib, 30t Counterweight (Configuration one)

42 m radius										
radius	9.03~14.4	15	20	25	26.72	30	35	40	40.67	41.88
2fall	26000	24870	18110	14050	13000	11340	9410	7960	7790	/
fall	13000									7500

36 m radius										
radius	7.97~15.2	20	25	27.88	30	34.74	35	35.95		
2fall	26000	19140	14790	13000	11900	9920	/	/		
fall	13000						9830	9500		

30 m radius										
radius	6.9~16	20	25	28.24	28.81	30				
2fall	26000	20000	15200	13000	12660	/				
fall	13000					12000				

Counter jib, 20t Counterweight (Configuration two)

42 m radius										
radius	9.03~12.4	15	20	22.67	25	30	35	40	40.67	41.88
2fall	26000	21030	15100	13000	11540	9160	7470	6200	6050	/
fall	13000									5800

36 m radius										
radius	7.97~13.2	15	20	23.87	25	30	34.74	35	35.95	
2fall	26000	22510	16110	13000	12280	9720	7970	/	/	
fall	13000						7890	7600		

30 m radius										
radius	6.9~14	15	20	24.71	28.81	30				
2fall	26000	24000	17000	13000	10580	/				
fall	13000					10000				

Counter jib, 10t Counterweight (Configuration three)

42 m radius										
radius	9.03~10.4	15	18.99	20	25	30	35	40	40.67	41.88
2fall	26000	17190	13000	12210	9220	7230	5800	4740	4610	/
fall	13000									4400

36 m radius										
radius	7.97~11	15	20.04	23.8	25	30	34.74	35	35.95	
2fall	26000	18320	13000	10500	9860	7750	6310	/	/	
fall	13000						6240	6000		

30 m radius										
radius	6.9~11.6	15	20	20.64	25	28.81	30			
2fall	26000	19270	13540	13000	10090	8270	/			
fall	13000					7800				

No counter jib, 30t Counterweight (Configuration four)

42 m										
radius	9.03~12.4	15	20	22.86	26	30	35	40.67	41	41.88
2fall	26000	21080	15200	13000	11140	9330	7650	6250	/	/
fall	13000								6180	6000

36 m										
radius	7.97~13	15	20	23.9	25	30	34.74	35.95		
2fall	26000	22200	16020	13000	12320	9840	8160	/		
fall	13000						7800			

30 m										
radius	6.9~13.6	15	20	24.47	28.81	30				
2fall	26000	23270	16630	13000	10550	/				
fall	13000					10000				

No counter jib, 20t Counterweight (Configuration five)

42 m										
radius	9.03~10.4	15	19.29	20	25	30	35	40	40.67	41.88
2fall	26000	17350	13000	12460	9530	7570	6180	5130	5010	/
fall	13000									4800

36 m										
radius	7.97~11	15	20.38	25	30	34.74	35.95			
2fall	26000	18470	13000	10180	8110	6700	/			
fall	13000						6400			

30 m										
radius	6.9~11.6	15	20	21.01	25	28.81	30			
2fall	26000	19420	13810	13000	10440	8660	/			
fall	13000					8200				



## Load Diagrams

WD26t

No counter jib, 10t Counterweight (Configuration six)

42 m radius

radius	9.03~10.4	15	16.45	20	22.66	30	35	40	40.67	41.88
2fall	22000	14490	13000	10250	8760	6010	4790	3890	3780	3600
fall		13000								

36 m radius

radius	7.97~11	15	17.51	20	25	30	34.74	35.95
2fall	22000	15540	13000	11110	8440	6670	5460	5200
fall		13000						

30 m radius

radius	6.9~11.6	15	20	25	28.81	30
2fall	22000	16380	11590	8720	7200	6800
fall						

No counterweight (Configuration seven)

42 m radius

radius	9.03~10.4	13.65	15	20	25	30	35	40.67	41.88	19
2fall	18000	13000	11550	7910	5720	4270	3230	2360	2200	8490
fall		13000								

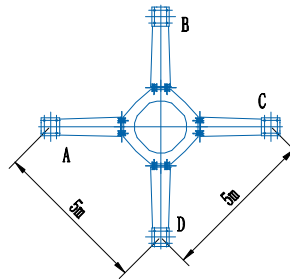
36 m radius

radius	7.97~11	14.56	15	20	25	30	34.74	35.95
2fall	18000	13000	12540	8790	6540	5040	4020	3800
fall		13000						

30 m radius

radius	6.9~11.6	15.33	20	25	28.81	30
2fall	18000	13000	9370	6990	5730	5400
fall		13000				

## Fixing angle loading



Leg Load

Configuration one

42 m					
Fixing angle loading	RA	RB	RC	RD	
	kg	kg	kg	kg	
In service	-22435	28418	79270	28418	
Out of service	-26199	19643	65484	19643	

36 m					
Fixing angle loading	RA	RB	RC	RD	
	kg	kg	kg	kg	
In service	-20612	28145	76902	28145	
Out of service	-43897	19370	82637	19370	

30 m					
Fixing angle loading	RA	RB	RC	RD	
	kg	kg	kg	kg	
In service	-18368	27849	74066	27849	
Out of service	-39194	19074	77342	19074	

Configuration two

42 m					
Fixing angle loading	RA	RB	RC	RD	
	kg	kg	kg	kg	
In service	-23886	25599	75084	25599	
Out of service	-16765	16824	50413	16824	

36 m					
Fixing angle loading	RA	RB	RC	RD	
	kg	kg	kg	kg	
In service	-21124	25720	72564	25720	
Out of service	-35164	16945	69054	16945	

30 m					
Fixing angle loading	RA	RB	RC	RD	
	kg	kg	kg	kg	
In service	-21490	25424	72338	25424	
Out of service	-29739	16649	63037	16649	

Configuration three

42 m					
Fixing angle loading	RA	RB	RC	RD	
	kg	kg	kg	kg	
In service	-24047	23568	71182	23568	
Out of service	-9450	14793	39035	14793	

36 m					
Fixing angle loading	RA	RB	RC	RD	
	kg	kg	kg	kg	
In service	-22982	23295	69573	23295	
Out of service	-27148	14520	56188	14520	

30 m					
Fixing angle loading	RA	RB	RC	RD	
	kg	kg	kg	kg	
In service	-21604	22999	67601	22999	
Out of service	-22075	14224	50500	14224	

## Fixing angle loading

WD26t

### Configuration four

42 m				
Fixing angle loading	RA	RB	RC	RD
	kg	kg	kg	kg
In service	-20285	28221	76726	28221
Out of service	-16725	19446	55616	19446

36 m				
Fixing angle loading	RA	RB	RC	RD
	kg	kg	kg	kg
In service	-22982	23295	69573	23295
Out of service	-27148	14520	56188	14520

30 m				
Fixing angle loading	RA	RB	RC	RD
	kg	kg	kg	kg
In service	-24047	23568	71182	23568
Out of service	-9450	14793	39035	14793

### Configuration five

42 m				
Fixing angle loading	RA	RB	RC	RD
	kg	kg	kg	kg
In service	-21348	25796	72940	25796
Out of service	-10897	17021	44939	17021

36 m				
Fixing angle loading	RA	RB	RC	RD
	kg	kg	kg	kg
In service	-21203	25524	72250	25524
Out of service	-28595	16794	62092	16794

30 m				
Fixing angle loading	RA	RB	RC	RD
	kg	kg	kg	kg
In service	-17278	25227	67732	25227
Out of service	-23171	16452	56075	16452

### Configuration six

42 m				
Fixing angle loading	RA	RB	RC	RD
	kg	kg	kg	kg
In service	-23045	22021	67086	22021
Out of service	-5787	14596	34979	14596

36 m				
Fixing angle loading	RA	RB	RC	RD
	kg	kg	kg	kg
In service	-22885	21749	66382	21749
Out of service	-23485	14324	52132	14324

30 m				
Fixing angle loading	RA	RB	RC	RD
	kg	kg	kg	kg
In service	-21490	25424	72338	25424
Out of service	-29739	16649	63037	16649









### Configuration seven

42 m				
Fixing angle loading	RA	RB	RC	RD
	kg	kg	kg	kg
In service	-22393	18246	58885	18246
Out of service	-1296	12171	25637	12171

36 m				
Fixing angle loading	RA	RB	RC	RD
	kg	kg	kg	kg
In service	-23819	17974	59766	17974
Out of service	-18854	11899	42651	11899

30 m				
Fixing angle loading	RA	RB	RC	RD
	kg	kg	kg	kg
In service	-20196	21452	63100	21452
Out of service	-18412	14027	46466	14027

## Mechanisms

Hoisting		Fall	/					
		Speed	m/min	0~25	0~75.7	0~12.5	0~37.8	
		LoadCapacityWeight	t	13	4	26	8	
Hoisting		Power	kw	67			700m	
		Speed	m/min	0~52	0~104			
		LoadCapacityWeight	t	2	1			
Trolleying		Power	kw	22				
		Time	min	≥ 2.7				
Slewing		Power	kW	55				
		Speed	r/min	0~0.62				
		Power	kw	7.5×2				

# DAHAN Dahan Technology Co., Ltd.

Address: Zheshan Industrial Park, Mingshui Economic Development Zone, Zhangqiu District, Shandong Province, China

Telephone: +86 531 83278899

Email: dahancranesale@yeah.net

Website: www.chinatowercranes.com

Note: Dahan Construction Machinery keeps innovating, so the actual product caused by the product does not match the appearance and technical parameters of the sample. The actual product shall prevail. If there is any change, the company has the final interpretation of the sample. 2019.12print