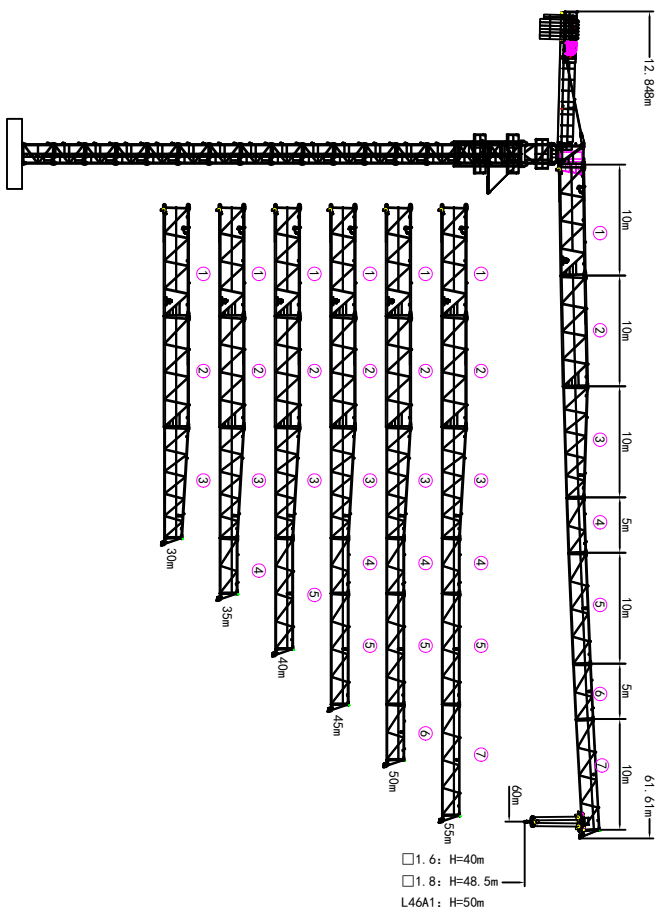
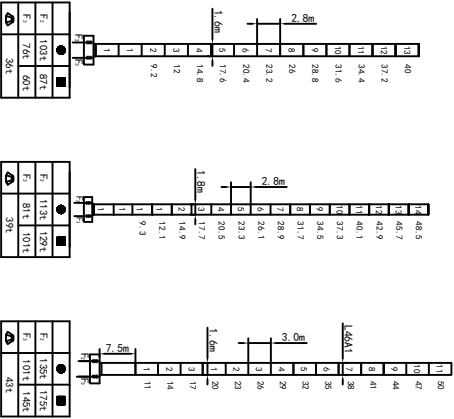


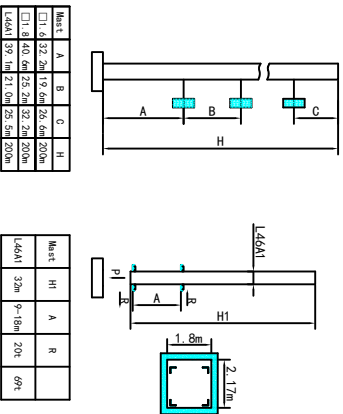
外形尺寸 Outline Dimensions



塔身截面 Masts



附着 Anchorages



● 工作状态应力 In service Reaction ■ 非工作状态应力 Out of service Reaction
 ○ 不平衡力及材料抗拉强度 Total weight of free standing crane (incl. counter weight & ball) (kN)

附墙道数: Number of the collar= (H-A)÷0.8m

载荷特性表 Load Diagrams 10t

R _{max}	Fail	R _{Co...}	G _{max}	15.0	20	25	30	35	40	45	50	55	60
60m	12.0	10.0	7.85	5.70	4.41	3.55	2.94	2.48	2.12	1.83	1.60	1.40	1.20
55m	22.8	5.0	5.0	5.0	4.51	3.65	3.04	2.58	2.22	1.93	1.70	1.50	
50m	13.0	10.0	8.57	6.24	4.85	3.92	3.25	2.75	2.36	2.05	1.80	1.60	
45m	24.8	5.0	5.0	5.0	4.95	4.02	3.35	2.85	2.46	2.15	1.90	1.70	
40m	13.5	10.0	8.93	6.53	5.08	4.12	3.44	2.92	2.52	2.20	2.00	1.80	
35m	25.8	5.0	5.0	5.0	5.0	4.22	3.54	3.02	2.62	2.30	2.10	1.90	
30m	14.5	10.0	9.63	7.03	5.47	4.43	3.69	3.13	2.70	2.40	2.20	2.00	
25m	14.8	10.0	9.83	7.14	5.52	4.45	3.68	3.10	2.70	2.40	2.20	2.00	
20m	27.7	5.0	5.0	5.0	5.0	4.55	3.78	3.20	2.80	2.50	2.30	2.10	
15m	15.0	10.0	10.0	7.33	5.73	4.66	3.90	3.30	2.90	2.60	2.40	2.20	
10m	28.7	5.0	5.0	5.0	5.0	4.76	4.00	3.40	3.00	2.70	2.50	2.30	
5m	15.0	10.0	10.0	7.35	5.76	4.70	4.00	3.40	3.00	2.70	2.50	2.30	
0m	28.9	5.0	5.0	5.0	5.0	4.80	4.00	3.40	3.00	2.70	2.50	2.30	

载荷特性表 Load Diagrams 8t

R _{max}	Fail	R _{Co...}	G _{max}	15.0	20	25	30	35	40	45	50	55	60
60m	15.4	8.0	8.0	5.95	4.59	3.68	3.03	2.54	2.16	1.86	1.61	1.40	1.20
55m	28.6	4.0	4.0	4.0	3.78	3.13	2.64	2.26	1.96	1.71	1.50	1.30	
50m	16.5	8.0	8.0	6.83	5.23	4.01	3.32	2.80	2.39	2.07	1.80	1.60	
45m	30.7	4.0	4.0	4.0	4.0	3.42	2.90	2.49	2.17	1.90	1.70	1.50	
40m	17.5	8.0	8.0	6.88	5.32	4.28	3.54	2.98	2.55	2.20	2.00	1.80	
35m	32.3	4.0	4.0	4.0	4.0	3.64	3.08	2.65	2.30	2.00	1.80	1.60	
30m	18.5	8.0	8.0	7.24	5.60	4.51	3.74	3.15	2.70	2.35	2.10	1.90	
25m	35.1	4.0	4.0	4.0	4.0	3.25	2.80	2.40	2.05	1.80	1.60	1.40	
20m	18.7	8.0	8.0	7.38	5.67	4.53	3.74	3.15	2.70	2.35	2.10	1.90	
15m	35.1	4.0	4.0	4.0	4.0	3.84	3.25	2.80	2.40	2.05	1.80	1.60	
10m	19.0	8.0	8.0	7.55	5.85	4.71	3.90	3.25	2.80	2.40	2.05	1.80	
5m	35.0	4.0	4.0	4.0	4.0	4.0	4.0	4.0	4.0	4.0	4.0	4.0	
0m	18.5	8.0	8.0	7.55	5.85	4.71	3.90	3.25	2.80	2.40	2.05	1.80	
30m	30.0	4.0	4.0	4.0	4.0	4.0	4.0	4.0	4.0	4.0	4.0	4.0	

机构 Mechanisms 8/10t

名称	m/min		t		m/min		t		容绳量 m	电机功率 kW
	0-80	2.0	0-40	4.0	0-40	4.0	0-40	4.0		
起升 Hoisting	8t	30LWF20	0-40	4.0	0-20	8.0	500	30		
	10t	45LWF25	0-80	2.5	0-40	5.0	500	45		
变幅 Trolleying	8t	BP4033X	0-40	m/min	0-40	m/min	3.3			
回转 Slewing	10t	BP6055X	0-60	rpm	0-60	rpm	5.5			
电源 Power	380V (±10%) /50Hz		2NPF4		30LWF20: 41.3kW		45LWF25: 58.5kW		4.0×2	

平衡重 Counter weight

塔身高度	平衡重重量	平衡重型号		
60m	12.848m	18200kg	PHZ2600	PHZ1300
55m	12.848m	16900kg	6	2
50m	12.848m	16900kg	6	1
45m	12.848m	15600kg	6	2
40m	12.848m	14300kg	5	1
35m	12.848m	13000kg	4	2
30m	12.848m	11700kg	4	1