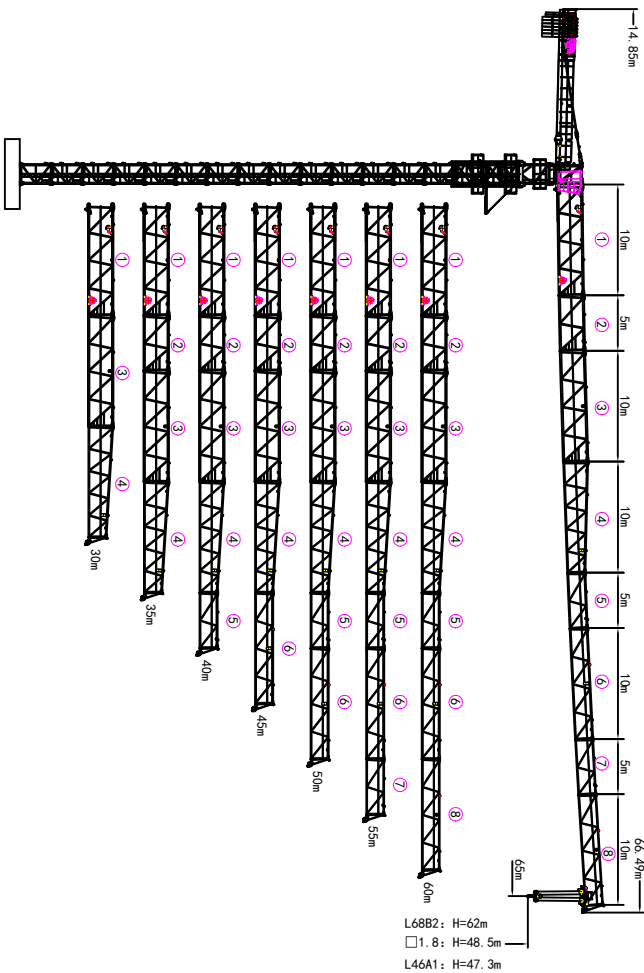
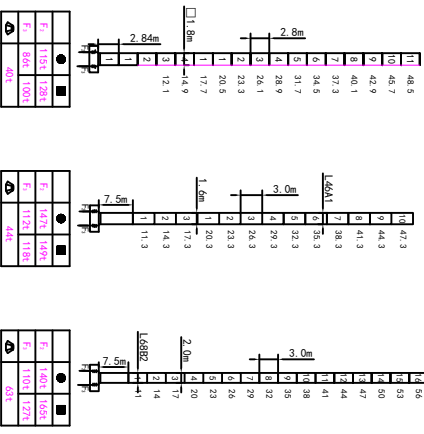


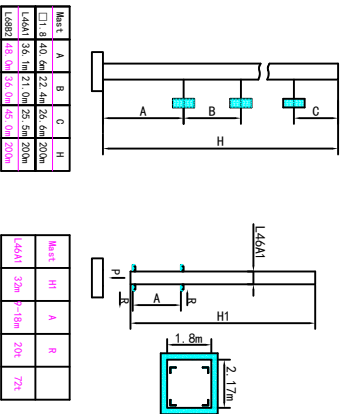
### 外形尺寸 Outline Dimensions



### 塔身截面 Masts



### 附着 Anchorages



● 工作状态反力 In service Reaction ■ 非工作状态反力 Out of service Reaction  
 ◎ 不平衡力及力矩的代数和 Total weight of free standing crane (unbalanced weight & bit/m)

### 载荷特性表 Load Diagrams

Radius (m)	Failure Mode	Capacity (kN)	20m	25m	30m	35m	40m	45m	50m	55m	60m	65m
14.8	Fall	10.0	7.09	5.44	4.35	3.57	2.98	2.52	2.16	1.86	1.61	1.40
27.3	Fall	5.0	5.0	4.45	3.67	3.08	2.62	2.26	1.96	1.71	1.50	
16.5	Fall	10.0	8.09	6.29	5.09	4.24	3.60	3.10	2.70	2.37	2.10	
31.0	Fall	5.0	5.0	5.0	4.34	3.70	3.20	2.80	2.47	2.20		
17.5	Fall	10.0	8.64	6.74	5.48	4.57	3.89	3.37	2.95	2.60		
33.0	Fall	5.0	5.0	5.0	4.67	3.99	3.47	3.05	2.70			
17.8	Fall	10.0	8.79	6.86	5.58	4.66	3.97	3.43	3.00			
33.5	Fall	5.0	5.0	5.0	4.76	4.07	3.53	3.10				
19.0	Fall	10.0	9.44	7.30	5.88	4.86	4.09	3.50				
34.8	Fall	5.0	5.0	5.0	4.96	4.19	3.60					
19.3	Fall	10.0	9.60	7.44	6.00	4.97	4.20					
35.4	Fall	5.0	5.0	5.0	5.0	5.0	4.30					
19.3	Fall	10.0	9.60	7.44	6.00	4.97						
35.0	Fall	5.0	5.0	5.0	5.0	5.0						
19.3	Fall	10.0	9.60	7.44	6.00							
30.0	Fall	5.0	5.0	5.0	5.0							

### 机构 Mechanisms 8/10t

名称 Name	m/min		t		m/min		t		容绳量 Capacity (m)	电机功率 Motor Power (kW)
	0-80	0-40	2.0	4.0	0-40	0-20	4.0	8.0		
起升 Hoisting	8t	30LWF20	0-40	4.0	0-20	2.5	0-40	5.0	500	30
回转 Revolving	10t	4SLWF25	0-40	5.0	0-20	5.0	0-20	10.0	500	45
变幅 Traversing	BR555X				0-65					5.5
回转 Slewing	ZRVF5.5				0-0.6					5.5×2
电源 Power	380V (±10%) / 50Hz				30LWF20: 46.5kW		4SLWF25: 61.5kW			

### 平衡重 Counter weight

高度 Height (m)	平衡重重量 Counter Weight (kg)	平衡重型号 Counter Weight Model	平衡重数量 Counter Weight Qty
65m	14,850kg	PHZ2600	6
60m	14,850kg	PHZ1000	2
55m	14,850kg		6
50m	14,850kg		6
45m	14,850kg		6
40m	14,850kg		5
35m	14,850kg		4
30m	14,850kg		4