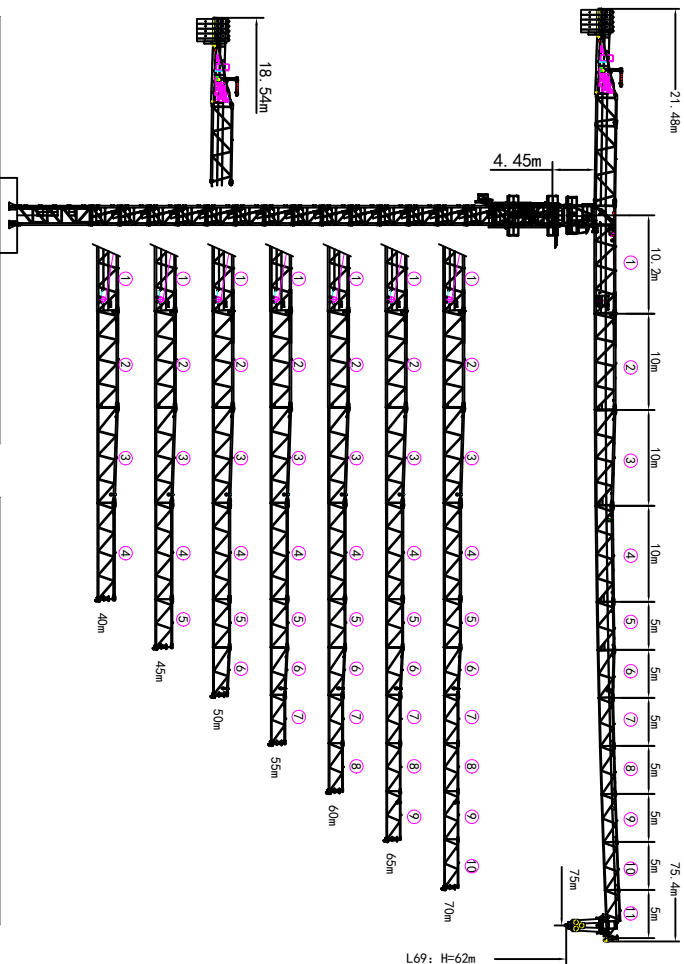


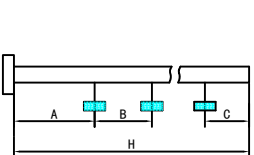
外形尺寸 Outline Dimensions



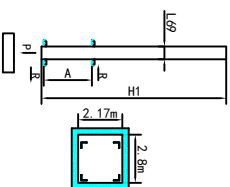
塔身截面 Masts

1	2	3	4	5	6	7	8	9	10
12	11	10	9	8	7	6	5	4	3
13	12	11	10	9	8	7	6	5	4
14	13	12	11	10	9	8	7	6	5
15	14	13	12	11	10	9	8	7	6
16	15	14	13	12	11	10	9	8	7
17	16	15	14	13	12	11	10	9	8
18	17	16	15	14	13	12	11	10	9
19	18	17	16	15	14	13	12	11	10
20	19	18	17	16	15	14	13	12	11
21	20	19	18	17	16	15	14	13	12
22	21	20	19	18	17	16	15	14	13
23	22	21	20	19	18	17	16	15	14
24	23	22	21	20	19	18	17	16	15
25	24	23	22	21	20	19	18	17	16
26	25	24	23	22	21	20	19	18	17
27	26	25	24	23	22	21	20	19	18
28	27	26	25	24	23	22	21	20	19
29	28	27	26	25	24	23	22	21	20
30	29	28	27	26	25	24	23	22	21
31	30	29	28	27	26	25	24	23	22
32	31	30	29	28	27	26	25	24	23
33	32	31	30	29	28	27	26	25	24
34	33	32	31	30	29	28	27	26	25
35	34	33	32	31	30	29	28	27	26
36	35	34	33	32	31	30	29	28	27
37	36	35	34	33	32	31	30	29	28
38	37	36	35	34	33	32	31	30	29
39	38	37	36	35	34	33	32	31	30
40	39	38	37	36	35	34	33	32	31
41	40	39	38	37	36	35	34	33	32
42	41	40	39	38	37	36	35	34	33

附着 Anchorages



Mast	A	B	C	H
L69	51m	30m	44.5m	270m



Mast	H	A	R
L69	44.5m	42.5m	30m

● 工作状态应力 In service Reaction ■ 非工作状态应力 Out of service Reaction
 ● 不平衡力及制动力制动力矩等 Total weight of free standing crane (excluding counter weight & ballast)

载荷特性表 Load Diagrams 16t

Radius	Fail	R _{Crane}	Counter	20	25	30	35	40	45	50	55	60	65	70	75
75m	18.6	16.0	14.73	11.34	9.08	6.31	5.40	4.68	4.08	3.59	3.18	2.82	2.52		
70m	19.9	16.0	15.89	12.24	9.82	8.12	6.86	5.88	5.10	4.47	3.95	3.50	3.12		
65m	20.7	16.0	16.0	12.82	10.31	8.54	7.22	6.20	5.39	4.74	4.19	3.72			
60m	21.4	16.0	16.0	13.39	10.78	8.94	7.58	6.52	5.68	4.99	4.42				
55m	21.9	16.0	16.0	13.69	11.03	9.15	7.76	6.68	5.82	5.12					
50m	22.1	16.0	16.0	13.89	11.2	9.30	7.88	6.79	5.92						
45m	22.7	16.0	16.0	14.32	11.55	9.60	8.14	7.02							
40m	23.3	16.0	16.0	14.75	11.89	9.89	8.40								

机构 Mechanisms 16t

名称	16t	m/min		t	m/min	t	容量	电机功率
		0-90	0-45					
起升 Hoisting	75LVF40	0-45	8.0	800	7.5			
变幅 Trolleying	BR6575X	0-65	m/min					
回转 Steering	3RNF7.5	0-0.79	r/min					7.5×3
电源 Power	380V (±10%) /50Hz							75LVF40: 105kW

平衡 Counter weight

高度	重量	型号	数量
75m	21.48m	PHZ5140	4
75m	24850kg	PHZ2870	1
70m	21.48m	PHZ5140	4
70m	23430kg	PHZ2870	1
65m	21.48m	PHZ5140	4
65m	21980kg	PHZ2870	1
60m	21.48m	PHZ5140	4
60m	21980kg	PHZ2870	1
55m	21.48m	PHZ5140	3
55m	19710kg	PHZ2870	1
50m	18.54m	PHZ5140	4
50m	23430kg	PHZ2870	1
45m	18.54m	PHZ5140	4
45m	20560kg	PHZ2870	1
40m	18.54m	PHZ5140	3
40m	19710kg	PHZ2870	1